

Datasheet for ABIN2463268

anti-ALG1L6P antibody[Go to Product page](#)**1** Image

Overview

Quantity:	100 µL
Target:	ALG1L6P
Reactivity:	Human
Host:	Rabbit
Clonality:	Polyclonal
Conjugate:	This ALG1L6P antibody is un-conjugated
Application:	Western Blotting (WB), ELISA

Product Details

Immunogen:	Antibody produced in rabbits immunized with a synthetic peptide corresponding a region of human LOC339879.
Purification:	Antibody is purified by protein A chromatography method.

Target Details

Target:	ALG1L6P
Alternative Name:	LOC339879 (ALG1L6P Products)
Background:	The function remains unknown.
Molecular Weight:	36 kDa
Gene ID:	339879
NCBI Accession:	XP_291054

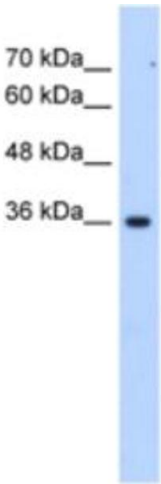
Application Details

Application Notes:	LOC339879 antibody can be used for detection of LOC339879 by ELISA at 1:62500. LOC339879 antibody can be used for detection of LOC339879 by western blot at 2.5 µg/mL, and HRP conjugated secondary antibody should be diluted 1:50,000 - 100,000.
Restrictions:	For Research Use only

Handling

Format:	Lyophilized
Reconstitution:	Add 100 µL of distilled water. Final antibody concentration is 1 mg/mL.
Concentration:	1 mg/mL
Buffer:	Antibody is lyophilized in PBS buffer with 2 % sucrose.
Handling Advice:	As with any antibody avoid repeat freeze-thaw cycles.
Storage:	4 °C/-20 °C
Storage Comment:	For short periods of storage (days) store at 4 °C. For longer periods of storage, store LOC339879 antibody at -20 °C.

Images



Western Blotting

Image 1.