

Datasheet for ABIN2463271

**anti-ALG1L3P antibody**[Go to Product page](#)**1** Image

## Overview

Quantity:	100 µL
Target:	ALG1L3P
Reactivity:	Human
Host:	Rabbit
Clonality:	Polyclonal
Conjugate:	This ALG1L3P antibody is un-conjugated
Application:	Western Blotting (WB), ELISA

## Product Details

Immunogen:	Antibody produced in rabbits immunized with a synthetic peptide corresponding a region of human LOC650515.
Purification:	Antibody is purified by peptide affinity chromatography method.

## Target Details

Target:	ALG1L3P
Abstract:	<a href="#">ALG1L3P Products</a>
Background:	The sequence of LOC650515 is derived from an annotated genomic sequence (NW_922073) using gene prediction method: GNOMON, supported by EST evidence. The exact function of LOC650515 remains unknown.
Molecular Weight:	39 kDa
Gene ID:	650515

## Target Details

NCBI Accession: [XP\\_944700](#)

## Application Details

Application Notes: LOC650515 antibody can be used for detection of LOC650515 by ELISA at 1:312500.  
LOC650515 antibody can be used for detection of LOC650515 by western blot at 0.5 µg/mL, and HRP conjugated secondary antibody should be diluted 1:50,000 - 100,000.

Restrictions: For Research Use only

## Handling

Format: Lyophilized

Reconstitution: Add 50 µL of distilled water. Final antibody concentration is 1 mg/mL.

Concentration: 1 mg/mL

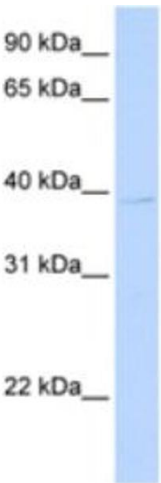
Buffer: Antibody is lyophilized in PBS buffer with 2 % sucrose.

Handling Advice: As with any antibody avoid repeat freeze-thaw cycles.

Storage: 4 °C/-20 °C

Storage Comment: For short periods of storage (days) store at 4 °C. For longer periods of storage, store LOC650515 antibody at -20 °C.

## Images



### Western Blotting

Image 1.