

Datasheet for ABIN2463281
anti-CATSPERG antibody[Go to Product page](#)

1 Image

Overview

Quantity:	100 µL
Target:	CATSPERG
Reactivity:	Human
Host:	Rabbit
Clonality:	Polyclonal
Conjugate:	This CATSPERG antibody is un-conjugated
Application:	Western Blotting (WB), ELISA

Product Details

Immunogen:	Antibody produced in rabbits immunized with a synthetic peptide corresponding a region of human C19orf15.
Purification:	Antibody is purified by peptide affinity chromatography method.

Target Details

Target:	CATSPERG
Alternative Name:	C19orf15 (CATSPERG Products)
Background:	C19orf15 is a single-pass type I membrane protein. The exact function of C19orf15 remains unknown.
Molecular Weight:	92 kDa
Gene ID:	57828

Target Details

NCBI Accession: [NP_067008](#)

UniProt: [Q6ZRH7](#)

Application Details

Application Notes: C19orf15 antibody can be used for detection of C19orf15 by ELISA at 1:312500. C19orf15 antibody can be used for detection of C19orf15 by western blot at 0.5 µg/mL, and HRP conjugated secondary antibody should be diluted 1:50,000 - 100,000.

Restrictions: For Research Use only

Handling

Format: Lyophilized

Reconstitution: Add 50 µL of distilled water. Final antibody concentration is 1 mg/mL.

Concentration: 1 mg/mL

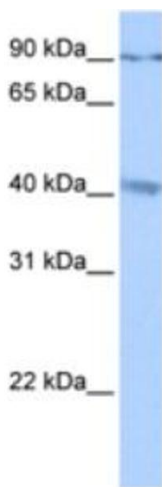
Buffer: Antibody is lyophilized in PBS buffer with 2 % sucrose.

Handling Advice: As with any antibody avoid repeat freeze-thaw cycles.

Storage: 4 °C/-20 °C

Storage Comment: For short periods of storage (days) store at 4 °C. For longer periods of storage, store C19orf15 antibody at -20 °C.

Images



Western Blotting

Image 1.