

Datasheet for ABIN2463329

anti-GTPase, IMAP Family Member 1 (GIMAP1) antibody[Go to Product page](#)**1** Image

Overview

Quantity:	100 µL
Target:	GTPase, IMAP Family Member 1 (GIMAP1)
Reactivity:	Human
Host:	Rabbit
Clonality:	Polyclonal
Conjugate:	Un-conjugated
Application:	Western Blotting (WB), ELISA

Product Details

Immunogen:	Antibody produced in rabbits immunized with a synthetic peptide corresponding a region of human GIMAP1.
Purification:	Antibody is purified by peptide affinity chromatography method.

Target Details

Target:	GTPase, IMAP Family Member 1 (GIMAP1)
Alternative Name:	GIMAP1 (GIMAP1 Products)
Background:	GIMAP1 belonging to the GTP-binding superfamily and to the immuno-associated nucleotide (IAN) subfamily of nucleotide-binding proteins. This gene encodes a protein belonging to the GTP-binding superfamily and to the immuno-associated nucleotide (IAN) subfamily of nucleotide-binding proteins. In humans, the IAN subfamily genes are located in a cluster at 7q36.1.

Target Details

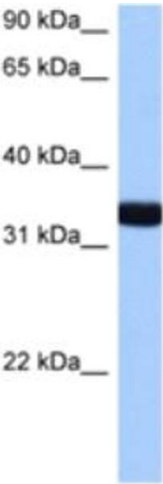
Molecular Weight:	34 kDa
Gene ID:	170575
NCBI Accession:	NP_570115
UniProt:	Q8WWP7

Application Details

Application Notes:	GIMAP1 antibody can be used for detection of GIMAP1 by ELISA at 1:312500. GIMAP1 antibody can be used for detection of GIMAP1 by western blot at 0.5 µg/mL, and HRP conjugated secondary antibody should be diluted 1:50,000 - 100,000.
Restrictions:	For Research Use only

Handling

Format:	Lyophilized
Reconstitution:	Add 50 µL of distilled water. Final antibody concentration is 1 mg/mL.
Concentration:	1 mg/mL
Buffer:	Antibody is lyophilized in PBS buffer with 2 % sucrose.
Handling Advice:	As with any antibody avoid repeat freeze-thaw cycles.
Storage:	4 °C/-20 °C
Storage Comment:	For short periods of storage (days) store at 4 °C. For longer periods of storage, store GIMAP1 antibody at -20 °C.



Western Blotting

Image 1.