

Datasheet for ABIN2463354

anti-ZC3H15 antibody[Go to Product page](#)**1** Image

Overview

Quantity:	100 µL
Target:	ZC3H15
Reactivity:	Human, Mouse, Rat
Host:	Rabbit
Clonality:	Polyclonal
Conjugate:	This ZC3H15 antibody is un-conjugated
Application:	Western Blotting (WB), ELISA

Product Details

Immunogen:	Antibody produced in rabbits immunized with a synthetic peptide corresponding a region of human ZC3H15.
Purification:	Antibody is purified by peptide affinity chromatography method.

Target Details

Target:	ZC3H15
Alternative Name:	ZC3H15 (ZC3H15 Products)
Background:	ZC3H15 belongs to the ZC3H15/TMA46 family. It contains 2 C3H1-type zinc fingers. ZC3H15 protects DRG1 from proteolytic degradation.
Molecular Weight:	48 kDa
Gene ID:	55854

Target Details

NCBI Accession: [NP_060941](#)

UniProt: [Q8WU90](#)

Application Details

Application Notes: ZC3H15 antibody can be used for detection of ZC3H15 by ELISA at 1:1562500. ZC3H15 antibody can be used for detection of ZC3H15 by western blot at 1 µg/mL, and HRP conjugated secondary antibody should be diluted 1:50,000 - 100,000.

Restrictions: For Research Use only

Handling

Format: Lyophilized

Reconstitution: Add 50 µL of distilled water. Final antibody concentration is 1 mg/mL.

Concentration: 1 mg/mL

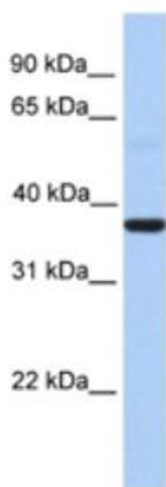
Buffer: Antibody is lyophilized in PBS buffer with 2 % sucrose.

Handling Advice: As with any antibody avoid repeat freeze-thaw cycles.

Storage: 4 °C/-20 °C

Storage Comment: For short periods of storage (days) store at 4 °C. For longer periods of storage, store ZC3H15 antibody at -20 °C.

Images



Western Blotting

Image 1.