



[Go to Product page](#)

Datasheet for ABIN2463369
anti-ZNF618 antibody

1 Image

Overview

Quantity:	100 µL
Target:	ZNF618
Reactivity:	Human, Rat
Host:	Rabbit
Clonality:	Polyclonal
Conjugate:	This ZNF618 antibody is un-conjugated
Application:	Western Blotting (WB), ELISA

Product Details

Immunogen:	Antibody produced in rabbits immunized with a synthetic peptide corresponding a region of human ZNF618.
Purification:	Antibody is purified by peptide affinity chromatography method.

Target Details

Target:	ZNF618
Alternative Name:	ZNF618 (ZNF618 Products)
Background:	ZNF618 belongs to the krueppel C2H2-type zinc-finger protein family. It contains 4 C2H2-type zinc fingers. ZNF618 may be involved in transcriptional regulation.
Molecular Weight:	41 kDa
Gene ID:	114991

Target Details

UniProt: [Q5T7W0](#)

Application Details

Application Notes: ZNF618 antibody can be used for detection of ZNF618 by ELISA at 1:62500. ZNF618 antibody can be used for detection of ZNF618 by western blot at 0.5 µg/mL, and HRP conjugated secondary antibody should be diluted 1:50,000 - 100,000.

Restrictions: For Research Use only

Handling

Format: Lyophilized

Reconstitution: Add 50 µL of distilled water. Final antibody concentration is 1 mg/mL.

Concentration: 1 mg/mL

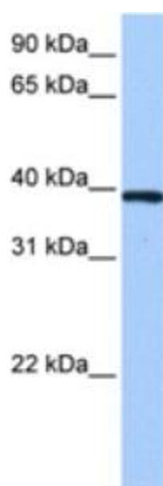
Buffer: Antibody is lyophilized in PBS buffer with 2 % sucrose.

Handling Advice: As with any antibody avoid repeat freeze-thaw cycles.

Storage: 4 °C/-20 °C

Storage Comment: For short periods of storage (days) store at 4 °C. For longer periods of storage, store ZNF618 antibody at -20 °C.

Images



Western Blotting

Image 1.