

Datasheet for ABIN2463384
anti-LOC727817 antibody



[Go to Product page](#)

1 Image

Overview

| | |
|--------------|--|
| Quantity: | 100 µL |
| Target: | LOC727817 |
| Reactivity: | Human |
| Host: | Rabbit |
| Clonality: | Polyclonal |
| Conjugate: | This LOC727817 antibody is un-conjugated |
| Application: | Western Blotting (WB), ELISA |

Product Details

| | |
|---------------|--|
| Immunogen: | Antibody produced in rabbits immunized with a synthetic peptide corresponding a region of human LOC727817. |
| Purification: | Antibody is purified by peptide affinity chromatography method. |

Target Details

| | |
|-------------------|--|
| Target: | LOC727817 |
| Alternative Name: | LOC727817 (LOC727817 Products) |
| Background: | The exact function of LOC727817 remains unknown. |
| Molecular Weight: | 17 kDa |
| Gene ID: | 727817 |
| NCBI Accession: | XP_001125873 |

Application Details

Application Notes: LOC727817 antibody can be used for detection of LOC727817 by ELISA at 1:312500.
LOC727817 antibody can be used for detection of LOC727817 by western blot at 1 µg/mL, and HRP conjugated secondary antibody should be diluted 1:50,000 - 100,000.

Restrictions: For Research Use only

Handling

Format: Lyophilized

Reconstitution: Add 50 µL of distilled water. Final antibody concentration is 1 mg/mL.

Concentration: 1 mg/mL

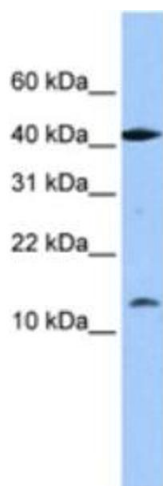
Buffer: Antibody is lyophilized in PBS buffer with 2 % sucrose.

Handling Advice: As with any antibody avoid repeat freeze-thaw cycles.

Storage: 4 °C/-20 °C

Storage Comment: For short periods of storage (days) store at 4 °C. For longer periods of storage, store LOC727817 antibody at -20 °C.

Images



Western Blotting

Image 1.