



[Go to Product page](#)

Datasheet for ABIN2463399
anti-ZNF806 antibody

1 Image

Overview

Quantity:	100 µL
Target:	ZNF806
Reactivity:	Human
Host:	Rabbit
Clonality:	Polyclonal
Conjugate:	This ZNF806 antibody is un-conjugated
Application:	Western Blotting (WB), ELISA

Product Details

Immunogen:	Antibody produced in rabbits immunized with a synthetic peptide corresponding a region of human LOC442049.
Purification:	Antibody is purified by peptide affinity chromatography method.

Target Details

Target:	ZNF806
Alternative Name:	LOC442049 (ZNF806 Products)
Background:	The sequence of LOC442049 is derived from an annotated genomic sequence (NW_921562) using gene prediction method: GNOMON. The exact function of LOC442049 remains unknown.
Molecular Weight:	70 kDa
Gene ID:	442049

Target Details

NCBI Accession: [XP_497879](#)

Application Details

Application Notes: LOC442049 antibody can be used for detection of LOC442049 by ELISA at 1:62500.
LOC442049 antibody can be used for detection of LOC442049 by western blot at 0.5 µg/mL, and HRP conjugated secondary antibody should be diluted 1:50,000 - 100,000.

Restrictions: For Research Use only

Handling

Format: Lyophilized

Reconstitution: Add 50 µL of distilled water. Final antibody concentration is 1 mg/mL.

Concentration: 1 mg/mL

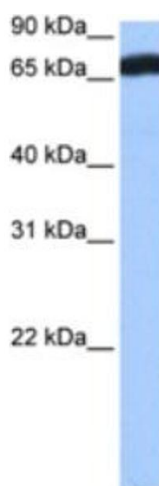
Buffer: Antibody is lyophilized in PBS buffer with 2 % sucrose.

Handling Advice: As with any antibody avoid repeat freeze-thaw cycles.

Storage: 4 °C/-20 °C

Storage Comment: For short periods of storage (days) store at 4 °C. For longer periods of storage, store LOC442049 antibody at -20 °C.

Images



Western Blotting

Image 1.