



Datasheet for ABIN2463405  
**anti-PRDM6 antibody**



[Go to Product page](#)

1 Image

Overview

Quantity:	100 µL
Target:	PRDM6
Reactivity:	Human
Host:	Rabbit
Clonality:	Polyclonal
Conjugate:	This PRDM6 antibody is un-conjugated
Application:	Western Blotting (WB), ELISA

Product Details

Immunogen:	Antibody produced in rabbits immunized with a synthetic peptide corresponding a region of human PRDM6.
Purification:	Antibody is purified by peptide affinity chromatography method.

Target Details

Target:	PRDM6
Alternative Name:	PRDM6 ( <a href="#">PRDM6 Products</a> )
Background:	PRDM6 contains 4 C2H2-type zinc fingers and 1 SET domain. PRDM6 may be involved in transcriptional regulation.
Molecular Weight:	67 kDa
Gene ID:	93166

## Target Details

NCBI Accession:	<a href="#">XP_942846</a>
UniProt:	<a href="#">Q9NQX0</a>
Pathways:	<a href="#">Regulation of Muscle Cell Differentiation</a>

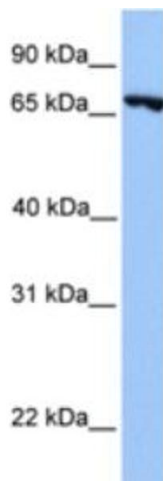
## Application Details

Application Notes:	PRDM6 antibody can be used for detection of PRDM6 by ELISA at 1:62500. PRDM6 antibody can be used for detection of PRDM6 by western blot at 1 µg/mL, and HRP conjugated secondary antibody should be diluted 1:50,000 - 100,000.
Restrictions:	For Research Use only

## Handling

Format:	Lyophilized
Reconstitution:	Add 50 µL of distilled water. Final antibody concentration is 1 mg/mL.
Concentration:	1 mg/mL
Buffer:	Antibody is lyophilized in PBS buffer with 2 % sucrose.
Handling Advice:	As with any antibody avoid repeat freeze-thaw cycles.
Storage:	4 °C/-20 °C
Storage Comment:	For short periods of storage (days) store at 4 °C. For longer periods of storage, store PRDM6 antibody at -20 °C.

## Images



### Western Blotting

Image 1.