

Datasheet for ABIN2463429

anti-Achaete-scute complex protein T5 (AC) antibody[Go to Product page](#)**1** Image

Overview

Quantity:	100 µL
Target:	Achaete-scute complex protein T5 (AC)
Reactivity:	Drosophila melanogaster
Host:	Rabbit
Clonality:	Polyclonal
Conjugate:	Un-conjugated
Application:	Western Blotting (WB), ELISA

Product Details

Immunogen:	Antibody produced in rabbits immunized with a synthetic peptide corresponding a region of Drosophila AC.
Purification:	Antibody is purified by peptide affinity chromatography method.

Target Details

Target:	Achaete-scute complex protein T5 (AC)
Abstract:	AC Products
Background:	The function remains unknown.
Molecular Weight:	23 kDa
Gene ID:	30981
NCBI Accession:	NP_476824

Target Details

UniProt: [P10083](#)

Application Details

Application Notes: AC antibody can be used for detection of AC by ELISA at 1:312500. AC antibody can be used for detection of AC by western blot at 0.25 µg/mL, and HRP conjugated secondary antibody should be diluted 1:50,000 - 100,000.

Restrictions: For Research Use only

Handling

Format: Lyophilized

Reconstitution: Add 50 µL of distilled water. Final antibody concentration is 1 mg/mL.

Concentration: 1 mg/mL

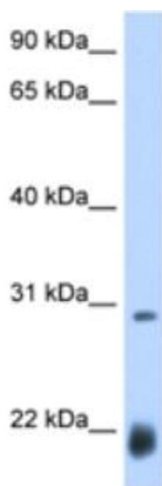
Buffer: Antibody is lyophilized in PBS buffer with 2 % sucrose.

Handling Advice: As with any antibody avoid repeat freeze-thaw cycles.

Storage: 4 °C/-20 °C

Storage Comment: For short periods of storage (days) store at 4 °C. For longer periods of storage, store AC antibody at -20 °C.

Images



Western Blotting

Image 1.