

Datasheet for ABIN2463452

anti-ZNF681 antibody[Go to Product page](#)**1** Image

Overview

Quantity:	100 µL
Target:	ZNF681
Reactivity:	Human
Host:	Rabbit
Clonality:	Polyclonal
Conjugate:	This ZNF681 antibody is un-conjugated
Application:	Western Blotting (WB), ELISA

Product Details

Immunogen:	Antibody produced in rabbits immunized with a synthetic peptide corresponding a region of human ZNF681.
Purification:	Antibody is purified by peptide affinity chromatography method.

Target Details

Target:	ZNF681
Alternative Name:	ZNF681 (ZNF681 Products)
Background:	ZNF681 belongs to the krueppel C2H2-type zinc-finger protein family. It Contains 16 C2H2-type zinc fingers. ZNF681 may be involved in transcriptional regulation.
Molecular Weight:	75 kDa
Gene ID:	148213

Target Details

NCBI Accession: [NP_612143](#)

UniProt: [P59817](#)

Application Details

Application Notes: ZNF681 antibody can be used for detection of ZNF681 by ELISA at 1:312500. ZNF681 antibody can be used for detection of ZNF681 by western blot at 1 µg/mL, and HRP conjugated secondary antibody should be diluted 1:50,000 - 100,000.

Restrictions: For Research Use only

Handling

Format: Lyophilized

Reconstitution: Add 50 µL of distilled water. Final antibody concentration is 1 mg/mL.

Concentration: 1 mg/mL

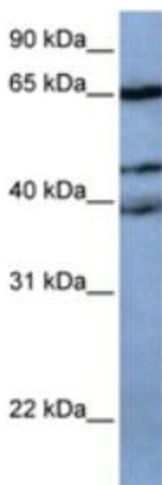
Buffer: Antibody is lyophilized in PBS buffer with 2 % sucrose.

Handling Advice: As with any antibody avoid repeat freeze-thaw cycles.

Storage: 4 °C/-20 °C

Storage Comment: For short periods of storage (days) store at 4 °C. For longer periods of storage, store ZNF681 antibody at -20 °C.

Images



Western Blotting

Image 1.