

Datasheet for ABIN2463463

anti-ZNF879 antibody[Go to Product page](#)**1** Image

Overview

Quantity:	100 µL
Target:	ZNF879
Reactivity:	Human
Host:	Rabbit
Clonality:	Polyclonal
Conjugate:	This ZNF879 antibody is un-conjugated
Application:	Western Blotting (WB), ELISA

Product Details

Immunogen:	Antibody produced in rabbits immunized with a synthetic peptide corresponding a region of human DKFZp686E2433.
Purification:	Antibody is purified by peptide affinity chromatography method.

Target Details

Target:	ZNF879
Alternative Name:	DKFZp686E2433 (ZNF879 Products)
Background:	The exact functions of DKFZp686E2433 remain unknown.
Molecular Weight:	77 kDa
Gene ID:	345462
NCBI Accession:	XP_293828

Target Details

UniProt: [B4DU55](#)

Application Details

Application Notes: DKFZp686E2433 antibody can be used for detection of DKFZp686E2433 by ELISA at 1:312500. DKFZp686E2433 antibody can be used for detection of DKFZp686E2433 by western blot at 0.5 µg/mL, and HRP conjugated secondary antibody should be diluted 1:50,000 - 100,000.

Restrictions: For Research Use only

Handling

Format: Lyophilized

Reconstitution: Add 50 µL of distilled water. Final antibody concentration is 1 mg/mL.

Concentration: 1 mg/mL

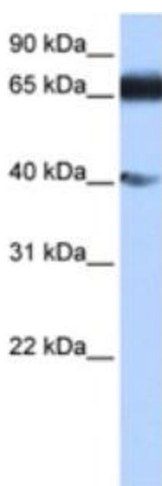
Buffer: Antibody is lyophilized in PBS buffer with 2 % sucrose.

Handling Advice: As with any antibody avoid repeat freeze-thaw cycles.

Storage: 4 °C/-20 °C

Storage Comment: For short periods of storage (days) store at 4 °C. For longer periods of storage, store DKFZp686E2433 antibody at -20 °C.

Images



Western Blotting

Image 1.