

Datasheet for ABIN2463474

anti-LRRC17 antibody[Go to Product page](#)**1** Image

Overview

| | |
|--------------|---------------------------------------|
| Quantity: | 100 µL |
| Target: | LRRC17 |
| Reactivity: | Human |
| Host: | Rabbit |
| Clonality: | Polyclonal |
| Conjugate: | This LRRC17 antibody is un-conjugated |
| Application: | Western Blotting (WB), ELISA |

Product Details

| | |
|---------------|---|
| Immunogen: | Antibody produced in rabbits immunized with a synthetic peptide corresponding a region of human LRRC17. |
| Purification: | Antibody is purified by peptide affinity chromatography method. |

Target Details

| | |
|-------------------|---|
| Target: | LRRC17 |
| Alternative Name: | LRRC17 (LRRC17 Products) |
| Background: | LRRC17 contains 6 LRR (leucine-rich) repeats. The exact function of LRRC17 remains unknown. |
| Molecular Weight: | 52 kDa |
| Gene ID: | 10234 |
| NCBI Accession: | NP_001026862 |

Target Details

UniProt: [Q8N6Y2](#)

Application Details

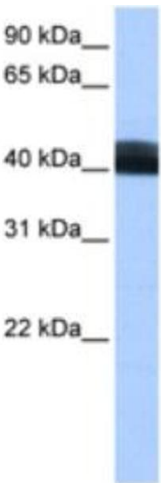
Application Notes: LRRC17 antibody can be used for detection of LRRC17 by ELISA at 1:62500. LRRC17 antibody can be used for detection of LRRC17 by western blot at 0.5 µg/mL, and HRP conjugated secondary antibody should be diluted 1:50,000 - 100,000.

Restrictions: For Research Use only

Handling

| | |
|------------------|--|
| Format: | Lyophilized |
| Reconstitution: | Add 50 µL of distilled water. Final antibody concentration is 1 mg/mL. |
| Concentration: | 1 mg/mL |
| Buffer: | Antibody is lyophilized in PBS buffer with 2 % sucrose. |
| Handling Advice: | As with any antibody avoid repeat freeze-thaw cycles. |
| Storage: | 4 °C/-20 °C |
| Storage Comment: | For short periods of storage (days) store at 4 °C. For longer periods of storage, store LRRC17 antibody at -20 °C. |

Images



Western Blotting

Image 1.