

Datasheet for ABIN2463480

**anti-NHEDC1 antibody**[Go to Product page](#)**1** Image

## Overview

Quantity:	100 µL
Target:	NHEDC1
Reactivity:	Human
Host:	Rabbit
Clonality:	Polyclonal
Conjugate:	This NHEDC1 antibody is un-conjugated
Application:	Western Blotting (WB), ELISA

## Product Details

Immunogen:	Antibody produced in rabbits immunized with a synthetic peptide corresponding a region of human NHEDC1.
Purification:	Antibody is purified by peptide affinity chromatography method.

## Target Details

Target:	NHEDC1
Alternative Name:	NHEDC1 ( <a href="#">NHEDC1 Products</a> )
Background:	NHEDC1 is a sodium/hydrogen exchanger and transmembrane protein. Highly conserved orthologs of this gene have been found in other mammalian species. The expression of NHEDC1 may be limited to testis.
Molecular Weight:	52 kDa
Gene ID:	150159

## Target Details

NCBI Accession: [NP\\_001094344](#)

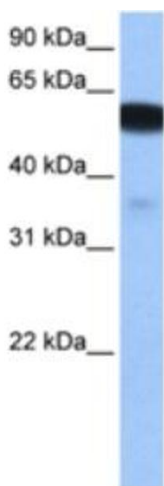
## Application Details

Application Notes:	NHEDC1 antibody can be used for detection of NHEDC1 by ELISA at 1:312500. NHEDC1 antibody can be used for detection of NHEDC1 by western blot at 0.5 µg/mL, and HRP conjugated secondary antibody should be diluted 1:50,000 - 100,000.
Restrictions:	For Research Use only

## Handling

Format:	Lyophilized
Reconstitution:	Add 50 µL of distilled water. Final antibody concentration is 1 mg/mL.
Concentration:	1 mg/mL
Buffer:	Antibody is lyophilized in PBS buffer with 2 % sucrose.
Handling Advice:	As with any antibody avoid repeat freeze-thaw cycles.
Storage:	4 °C/-20 °C
Storage Comment:	For short periods of storage (days) store at 4 °C. For longer periods of storage, store NHEDC1 antibody at -20 °C.

## Images



### Western Blotting

Image 1.