

Datasheet for ABIN2463526  
**anti-DYNLL2 antibody**



[Go to Product page](#)

1 Image

## Overview

Quantity:	100 µL
Target:	DYNLL2
Reactivity:	Human, Mouse, Rat, C. elegans, Drosophila melanogaster
Host:	Rabbit
Clonality:	Polyclonal
Conjugate:	This DYNLL2 antibody is un-conjugated
Application:	ELISA, Western Blotting (WB)

## Product Details

Immunogen:	Antibody produced in rabbits immunized with a synthetic peptide corresponding a region of human DYNLL2.
Purification:	Antibody is purified by peptide affinity chromatography method.

## Target Details

Target:	DYNLL2
Alternative Name:	DYNLL2 ( <a href="#">DYNLL2 Products</a> )
Background:	DYNLL2 belongs to the dynein light chain family. DYNLL2 may be involved in some aspects of dynein-related intracellular transport and motility. It may play a role in changing or maintaining the spatial distribution of cytoskeletal structures.
Molecular Weight:	10 kDa
Gene ID:	140735

## Target Details

NCBI Accession: [NP\\_542408](#)

UniProt: [Q96FJ2](#)

Pathways: [M Phase](#)

## Application Details

**Application Notes:** DYNLL2 antibody can be used for detection of DYNLL2 by ELISA at 1:62500. DYNLL2 antibody can be used for detection of DYNLL2 by western blot at 1 µg/mL, and HRP conjugated secondary antibody should be diluted 1:50,000 - 100,000.

**Restrictions:** For Research Use only

## Handling

**Format:** Lyophilized

**Reconstitution:** Add 50 µL of distilled water. Final antibody concentration is 1 mg/mL.

**Concentration:** 1 mg/mL

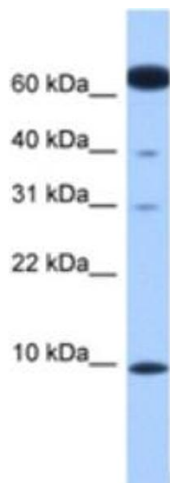
**Buffer:** Antibody is lyophilized in PBS buffer with 2 % sucrose.

**Handling Advice:** As with any antibody avoid repeat freeze-thaw cycles.

**Storage:** 4 °C/-20 °C

**Storage Comment:** For short periods of storage (days) store at 4 °C. For longer periods of storage, store DYNLL2 antibody at -20 °C.

## Images



### Western Blotting

**Image 1.**