

Datasheet for ABIN2463544

anti-KLHDC1 antibody[Go to Product page](#)**1** Image

Overview

| | |
|--------------|---------------------------------------|
| Quantity: | 100 µL |
| Target: | KLHDC1 |
| Reactivity: | Human, Mouse, Rat |
| Host: | Rabbit |
| Clonality: | Polyclonal |
| Conjugate: | This KLHDC1 antibody is un-conjugated |
| Application: | Western Blotting (WB), ELISA |

Product Details

| | |
|---------------|---|
| Immunogen: | Antibody produced in rabbits immunized with a synthetic peptide corresponding a region of human KLHDC1. |
| Purification: | Antibody is purified by peptide affinity chromatography method. |

Target Details

| | |
|-------------------|---|
| Target: | KLHDC1 |
| Alternative Name: | KLHDC1 (KLHDC1 Products) |
| Background: | KLHDC1 contains 6 Kelch repeats. KLHDC1 and KLHDC2 have differential localization and activity in cultured mammalian cells. The exact function of KLHDC1 remains unknown. |
| Molecular Weight: | 47 kDa |
| Gene ID: | 122773 |

Target Details

NCBI Accession: [NP_751943](#)

UniProt: [Q8N7A1](#)

Application Details

Application Notes: KLHDC1 antibody can be used for detection of KLHDC1 by ELISA at 1:312500. KLHDC1 antibody can be used for detection of KLHDC1 by western blot at 1 µg/mL, and HRP conjugated secondary antibody should be diluted 1:50,000 - 100,000.

Restrictions: For Research Use only

Handling

Format: Lyophilized

Reconstitution: Add 50 µL of distilled water. Final antibody concentration is 1 mg/mL.

Concentration: 1 mg/mL

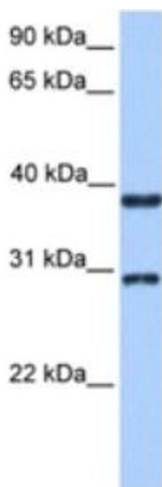
Buffer: Antibody is lyophilized in PBS buffer with 2 % sucrose.

Handling Advice: As with any antibody avoid repeat freeze-thaw cycles.

Storage: 4 °C/-20 °C

Storage Comment: For short periods of storage (days) store at 4 °C. For longer periods of storage, store KLHDC1 antibody at -20 °C.

Images



Western Blotting

Image 1.