

Datasheet for ABIN2463547

**anti-CCDC78 antibody**[Go to Product page](#)**1** Image

## Overview

Quantity:	100 µL
Target:	CCDC78
Reactivity:	Human
Host:	Rabbit
Clonality:	Polyclonal
Conjugate:	This CCDC78 antibody is un-conjugated
Application:	Western Blotting (WB), ELISA

## Product Details

Immunogen:	Antibody produced in rabbits immunized with a synthetic peptide corresponding a region of human CCDC78.
Purification:	Antibody is purified by peptide affinity chromatography method.

## Target Details

Target:	CCDC78
Alternative Name:	CCDC78 ( <a href="#">CCDC78 Products</a> )
Background:	The exact function of CCDC78 remains unknown.
Molecular Weight:	37 kDa
Gene ID:	124093
NCBI Accession:	<a href="#">NP_775747</a>

## Target Details

UniProt:	<a href="#">A2IDD5</a>
Pathways:	<a href="#">Skeletal Muscle Fiber Development</a>

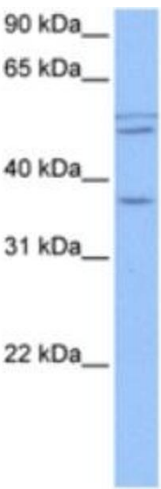
## Application Details

Application Notes:	CCDC78 antibody can be used for detection of CCDC78 by ELISA at 1:312500. CCDC78 antibody can be used for detection of CCDC78 by western blot at 1 µg/mL, and HRP conjugated secondary antibody should be diluted 1:50,000 - 100,000.
Restrictions:	For Research Use only

## Handling

Format:	Lyophilized
Reconstitution:	Add 50 µL of distilled water. Final antibody concentration is 1 mg/mL.
Concentration:	1 mg/mL
Buffer:	Antibody is lyophilized in PBS buffer with 2 % sucrose.
Handling Advice:	As with any antibody avoid repeat freeze-thaw cycles.
Storage:	4 °C/-20 °C
Storage Comment:	For short periods of storage (days) store at 4 °C. For longer periods of storage, store CCDC78 antibody at -20 °C.

## Images



### Western Blotting

Image 1.