

Datasheet for ABIN2463553

anti-Parathyroid Hormone 2 (PTH2) antibody[Go to Product page](#)**1** Image

Overview

| | |
|--------------|------------------------------|
| Quantity: | 100 µL |
| Target: | Parathyroid Hormone 2 (PTH2) |
| Reactivity: | Human, Mouse, Rat |
| Host: | Rabbit |
| Clonality: | Polyclonal |
| Conjugate: | Un-conjugated |
| Application: | ELISA, Western Blotting (WB) |

Product Details

| | |
|---------------|---|
| Immunogen: | Antibody produced in rabbits immunized with a synthetic peptide corresponding a region of human PTH2. |
| Purification: | Antibody is purified by peptide affinity chromatography method. |

Target Details

| | |
|-------------------|---|
| Target: | Parathyroid Hormone 2 (PTH2) |
| Alternative Name: | PTH2 (PTH2 Products) |
| Background: | TIP39 is related to parathyroid hormone (PTH) and PTH-related protein (PTHrP) and is a ligand for PTH receptor-2. TIP39 is related to parathyroid hormone (PTH, MIM 168450) and PTH-related protein (PTHrP, MIM 168470) and is a ligand for PTH receptor-2 (PTHr2, MIM 601469) (John et al., 2002 [PubMed 11861531]). |
| Molecular Weight: | 11 kDa |

Target Details

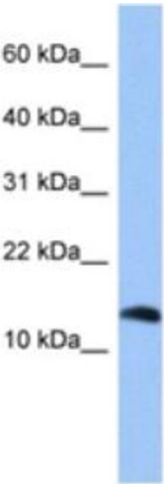
| | |
|-----------------|---|
| Gene ID: | 113091 |
| NCBI Accession: | NP_848544 |
| UniProt: | Q96A98 |
| Pathways: | Sensory Perception of Sound , cAMP Metabolic Process , Regulation of Muscle Cell Differentiation , Tube Formation , Skeletal Muscle Fiber Development |

Application Details

| | |
|--------------------|---|
| Application Notes: | PTH2 antibody can be used for detection of PTH2 by ELISA at 1:312500. PTH2 antibody can be used for detection of PTH2 by western blot at 1 µg/mL, and HRP conjugated secondary antibody should be diluted 1:50,000 - 100,000. |
| Restrictions: | For Research Use only |

Handling

| | |
|------------------|--|
| Format: | Lyophilized |
| Reconstitution: | Add 50 µL of distilled water. Final antibody concentration is 1 mg/mL. |
| Concentration: | 1 mg/mL |
| Buffer: | Antibody is lyophilized in PBS buffer with 2 % sucrose. |
| Handling Advice: | As with any antibody avoid repeat freeze-thaw cycles. |
| Storage: | 4 °C/-20 °C |
| Storage Comment: | For short periods of storage (days) store at 4 °C. For longer periods of storage, store PTH2 antibody at -20 °C. |



Western Blotting

Image 1.