

Datasheet for ABIN2463611

**anti-GSG1 antibody**[Go to Product page](#)**1** Image

## Overview

Quantity:	100 µL
Target:	GSG1
Reactivity:	Human
Host:	Rabbit
Clonality:	Polyclonal
Conjugate:	This GSG1 antibody is un-conjugated
Application:	Western Blotting (WB), ELISA

## Product Details

Immunogen:	Antibody produced in rabbits immunized with a synthetic peptide corresponding a region of human GSG1.
Purification:	Antibody is purified by peptide affinity chromatography method.

## Target Details

Target:	GSG1
Alternative Name:	GSG1 ( <a href="#">GSG1 Products</a> )
Background:	GSG1 belongs to the GSG1 family. GSG1 may cause the redistribution of PAPOLB from the cytosol to the endoplasmic reticulum.
Molecular Weight:	41 kDa
Gene ID:	83445

## Target Details

NCBI Accession: [NP\\_001074024](#)

UniProt: [Q2KHT4](#)

## Application Details

Application Notes: GSG1 antibody can be used for detection of GSG1 by ELISA at 1:312500. GSG1 antibody can be used for detection of GSG1 by western blot at 1 µg/mL, and HRP conjugated secondary antibody should be diluted 1:50,000 - 100,000.

Restrictions: For Research Use only

## Handling

Format: Lyophilized

Reconstitution: Add 50 µL of distilled water. Final antibody concentration is 1 mg/mL.

Concentration: 1 mg/mL

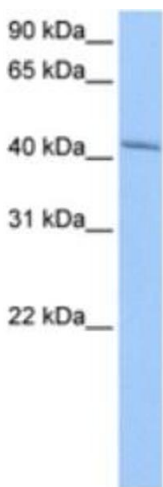
Buffer: Antibody is lyophilized in PBS buffer with 2 % sucrose.

Handling Advice: As with any antibody avoid repeat freeze-thaw cycles.

Storage: 4 °C/-20 °C

Storage Comment: For short periods of storage (days) store at 4 °C. For longer periods of storage, store GSG1 antibody at -20 °C.

## Images



### Western Blotting

Image 1.