

Datasheet for ABIN2463695
anti-CXCL14 antibody



[Go to Product page](#)

1 Image

Overview

Quantity:	100 µL
Target:	CXCL14
Reactivity:	Human, Mouse, Rat, Dog
Host:	Rabbit
Clonality:	Polyclonal
Conjugate:	This CXCL14 antibody is un-conjugated
Application:	ELISA, Western Blotting (WB)

Product Details

Immunogen:	Antibody produced in rabbits immunized with a synthetic peptide corresponding a region of human CXCL14.
Purification:	Antibody is purified by protein A chromatography method.

Target Details

Target:	CXCL14
Alternative Name:	CXCL14 (CXCL14 Products)
Background:	CXCL14 belongs to the cytokine family which encode secreted proteins involved in immunoregulatory and inflammatory processes. The protein encoded by this gene is structurally related to the CXC (Cys-X-Cys) subfamily of cytokines. Members of this subfamily are characterized by two cysteines separated by a single amino acid. This cytokine displays chemotactic activity for monocytes but not for lymphocytes, dendritic cells, neutrophils or

Target Details

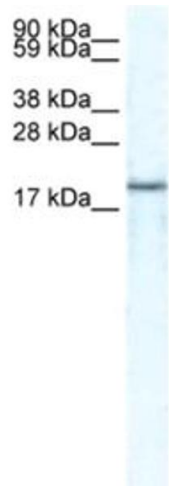
	macrophages. It has been implicated that this cytokine is involved in the homeostasis of monocyte-derived macrophages rather than in inflammation.
Molecular Weight:	13 kDa
Gene ID:	9547
NCBI Accession:	NP_004878
UniProt:	Q9NS21
Pathways:	Autophagy

Application Details

Application Notes:	CXCL14 antibody can be used for detection of CXCL14 by ELISA at 1:312500. CXCL14 antibody can be used for detection of CXCL14 by western blot at 5.0 µg/mL, and HRP conjugated secondary antibody should be diluted 1:50,000 - 100,000.
Restrictions:	For Research Use only

Handling

Format:	Lyophilized
Reconstitution:	Add 100 µL of distilled water. Final antibody concentration is 1 mg/mL.
Concentration:	1 mg/mL
Buffer:	Antibody is lyophilized in PBS buffer with 2 % sucrose.
Handling Advice:	As with any antibody avoid repeat freeze-thaw cycles.
Storage:	4 °C/-20 °C
Storage Comment:	For short periods of storage (days) store at 4 °C. For longer periods of storage, store CXCL14 antibody at -20 °C.



Western Blotting

Image 1.