

Datasheet for ABIN2463712
anti-Caveolin 3 antibody



[Go to Product page](#)

1 Image

Overview

| | |
|--------------|---|
| Quantity: | 100 µL |
| Target: | Caveolin 3 (CAV3) |
| Reactivity: | Human, Dog |
| Host: | Rabbit |
| Clonality: | Polyclonal |
| Conjugate: | This Caveolin 3 antibody is un-conjugated |
| Application: | Western Blotting (WB), ELISA |

Product Details

| | |
|---------------|---|
| Immunogen: | Antibody produced in rabbits immunized with a synthetic peptide corresponding a region of human CAV3. |
| Purification: | Antibody is purified by peptide affinity chromatography method. |

Target Details

| | |
|-------------------|--|
| Target: | Caveolin 3 (CAV3) |
| Alternative Name: | CAV3 (CAV3 Products) |
| Background: | CAV3 is a caveolin family member, which functions as a component of the caveolae plasma membranes found in most cell types. Caveolin proteins are proposed to be scaffolding proteins for organizing and concentrating certain caveolin-interacting molecules. Mutations identified in this gene lead to interference with protein oligomerization or intra-cellular routing, disrupting caveolae formation and resulting in Limb-Girdle muscular dystrophy type-1C (LGMD-1C), |

Target Details

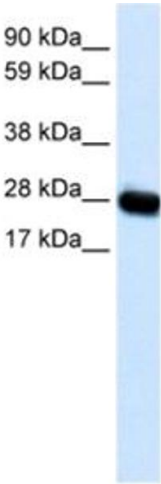
| | |
|-------------------|--|
| | hyperCKemia or rippling muscle disease (RMD). Alternative splicing has been identified for this locus, with inclusion or exclusion of a differentially spliced intron. In addition, transcripts utilize multiple polyA sites and contain two potential translation initiation sites. |
| Molecular Weight: | 17 kDa |
| Gene ID: | 859 |
| NCBI Accession: | NP_001225 |
| UniProt: | P56539 |
| Pathways: | Carbohydrate Homeostasis , Regulation of Muscle Cell Differentiation , Regulation of Cell Size , Skeletal Muscle Fiber Development , Negative Regulation of Transporter Activity |

Application Details

| | |
|--------------------|--|
| Application Notes: | CAV3 antibody can be used for detection of CAV3 by ELISA at 1:12500. CAV3 antibody can be used for detection of CAV3 by western blot at 0.5 µg/mL, and HRP conjugated secondary antibody should be diluted 1:50,000 - 100,000. |
| Restrictions: | For Research Use only |

Handling

| | |
|------------------|--|
| Format: | Lyophilized |
| Reconstitution: | Add 50 µL of distilled water. Final antibody concentration is 1 mg/mL. |
| Concentration: | 1 mg/mL |
| Buffer: | Antibody is lyophilized in PBS buffer with 2 % sucrose. |
| Handling Advice: | As with any antibody avoid repeat freeze-thaw cycles. |
| Storage: | 4 °C/-20 °C |
| Storage Comment: | For short periods of storage (days) store at 4 °C. For longer periods of storage, store CAV3 antibody at -20 °C. |



Western Blotting

Image 1.