

Datasheet for ABIN2463841
anti-LHX2 antibody



[Go to Product page](#)

1 Image

Overview

Quantity:	100 µL
Target:	LHX2
Reactivity:	Human, Mouse, Rat, Dog
Host:	Rabbit
Clonality:	Polyclonal
Conjugate:	This LHX2 antibody is un-conjugated
Application:	Western Blotting (WB), ELISA

Product Details

Immunogen:	Antibody produced in rabbits immunized with a synthetic peptide corresponding a region of human LHX2.
Purification:	Antibody is purified by protein A chromatography method.

Target Details

Target:	LHX2
Alternative Name:	LHX2 (LHX2 Products)
Background:	LHX2 is a protein belonging to a large protein family, members of which carry the LIM domain, a unique cysteine-rich zinc-binding domain. The encoded protein may function as a transcriptional regulator. The protein can recapitulate or rescue phenotypes in Drosophila caused by a related protein, suggesting conservation of function during evolution.
Molecular Weight:	44 kDa

Target Details

Gene ID:	9355
NCBI Accession:	NP_004780
UniProt:	P50458
Pathways:	Tube Formation

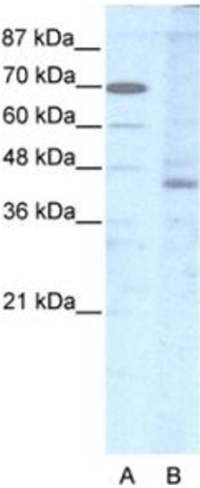
Application Details

Application Notes: LHX2 antibody can be used for detection of LHX2 by ELISA at 1:312500. LHX2 antibody can be used for detection of LHX2 by western blot at 2.5 µg/mL, and HRP conjugated secondary antibody should be diluted 1:50,000 - 100,000.

Restrictions: For Research Use only

Handling

Format:	Lyophilized
Reconstitution:	Add 100 µL of distilled water. Final antibody concentration is 1 mg/mL.
Concentration:	1 mg/mL
Buffer:	Antibody is lyophilized in PBS buffer with 2 % sucrose.
Handling Advice:	As with any antibody avoid repeat freeze-thaw cycles.
Storage:	4 °C/-20 °C
Storage Comment:	For short periods of storage (days) store at 4 °C. For longer periods of storage, store LHX2 antibody at -20 °C.



Western Blotting

Image 1.