

Datasheet for ABIN2463917

anti-LRRC8B antibody[Go to Product page](#)**1** Image

Overview

Quantity:	100 µL
Target:	LRRC8B
Reactivity:	Human, Mouse, Rat
Host:	Rabbit
Clonality:	Polyclonal
Conjugate:	This LRRC8B antibody is un-conjugated
Application:	Western Blotting (WB), ELISA

Product Details

Immunogen:	Antibody produced in rabbits immunized with a synthetic peptide corresponding a region of human LRRC8B.
Purification:	Antibody is purified by peptide affinity chromatography method.

Target Details

Target:	LRRC8B
Alternative Name:	LRRC8B (LRRC8B Products)
Background:	The exact function of LRRC8B remains unknown.
Molecular Weight:	92 kDa
Gene ID:	23507
NCBI Accession:	NP_056165

Target Details

UniProt: [Q6P9F7](#)

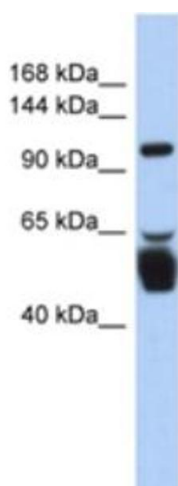
Application Details

Application Notes:	LRRC8B antibody can be used for detection of LRRC8B by ELISA at 1:62500. LRRC8B antibody can be used for detection of LRRC8B by western blot at 1 µg/mL, and HRP conjugated secondary antibody should be diluted 1:50,000 - 100,000.
Restrictions:	For Research Use only

Handling

Format:	Lyophilized
Reconstitution:	Add 50 µL of distilled water. Final antibody concentration is 1 mg/mL.
Concentration:	1 mg/mL
Buffer:	Antibody is lyophilized in PBS buffer with 2 % sucrose.
Handling Advice:	As with any antibody avoid repeat freeze-thaw cycles.
Storage:	4 °C/-20 °C
Storage Comment:	For short periods of storage (days) store at 4 °C. For longer periods of storage, store LRRC8B antibody at -20 °C.

Images



Western Blotting

Image 1.