

Datasheet for ABIN2463919
anti-METTL11B antibody[Go to Product page](#)

1 Image

Overview

Quantity:	100 µL
Target:	METTL11B (C10RF184)
Reactivity:	Human
Host:	Rabbit
Clonality:	Polyclonal
Conjugate:	This METTL11B antibody is un-conjugated
Application:	Western Blotting (WB), ELISA

Product Details

Immunogen:	Antibody produced in rabbits immunized with a synthetic peptide corresponding a region of human C1orf184.
Purification:	Antibody is purified by peptide affinity chromatography method.

Target Details

Target:	METTL11B (C10RF184)
Alternative Name:	C1orf184 (C10RF184 Products)
Background:	The exact function of C1orf184 remains unknown.
Molecular Weight:	32 kDa
Gene ID:	149281
NCBI Accession:	XP_089281

Target Details

UniProt: [Q5VY1](#)

Application Details

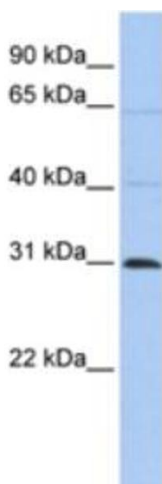
Application Notes: C1orf184 antibody can be used for detection of C1orf184 by ELISA at 1:62500. C1orf184 antibody can be used for detection of C1orf184 by western blot at 1 µg/mL, and HRP conjugated secondary antibody should be diluted 1:50,000 - 100,000.

Restrictions: For Research Use only

Handling

Format:	Lyophilized
Reconstitution:	Add 50 µL of distilled water. Final antibody concentration is 1 mg/mL.
Concentration:	1 mg/mL
Buffer:	Antibody is lyophilized in PBS buffer with 2 % sucrose.
Handling Advice:	As with any antibody avoid repeat freeze-thaw cycles.
Storage:	4 °C/-20 °C
Storage Comment:	For short periods of storage (days) store at 4 °C. For longer periods of storage, store C1orf184 antibody at -20 °C.

Images



Western Blotting

Image 1.