

Datasheet for ABIN2463922  
**anti-RWDD2A antibody**[Go to Product page](#)

## 1 Image

## Overview

Quantity:	100 µL
Target:	RWDD2A
Reactivity:	Human, Mouse
Host:	Rabbit
Clonality:	Polyclonal
Conjugate:	This RWDD2A antibody is un-conjugated
Application:	ELISA, Western Blotting (WB)

## Product Details

Immunogen:	Antibody produced in rabbits immunized with a synthetic peptide corresponding a region of human RWDD2A.
Purification:	Antibody is purified by peptide affinity chromatography method.

## Target Details

Target:	RWDD2A
Alternative Name:	RWDD2A ( <a href="#">RWDD2A Products</a> )
Background:	The specific function of RWDD2A is not yet known.
Molecular Weight:	32 kDa
Gene ID:	112611
NCBI Accession:	<a href="#">NP_219479</a>

## Target Details

UniProt: [Q9UIY3](#)

## Application Details

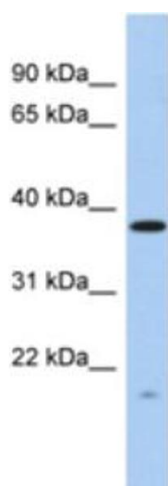
Application Notes: RWDD2A antibody can be used for detection of RWDD2A by ELISA at 1:62500. RWDD2A antibody can be used for detection of RWDD2A by western blot at 1 µg/mL, and HRP conjugated secondary antibody should be diluted 1:50,000 - 100,000.

Restrictions: For Research Use only

## Handling

Format:	Lyophilized
Reconstitution:	Add 50 µL of distilled water. Final antibody concentration is 1 mg/mL.
Concentration:	1 mg/mL
Buffer:	Antibody is lyophilized in PBS buffer with 2 % sucrose.
Handling Advice:	As with any antibody avoid repeat freeze-thaw cycles.
Storage:	4 °C/-20 °C
Storage Comment:	For short periods of storage (days) store at 4 °C. For longer periods of storage, store RWDD2A antibody at -20 °C.

## Images



### Western Blotting

Image 1.