



[Go to Product page](#)

Datasheet for ABIN2463923

anti-CIB3 antibody

1 Image

Overview

Quantity:	100 µL
Target:	CIB3
Reactivity:	Human, Mouse, Rat
Host:	Rabbit
Clonality:	Polyclonal
Conjugate:	This CIB3 antibody is un-conjugated
Application:	Western Blotting (WB), ELISA

Product Details

Immunogen:	Antibody produced in rabbits immunized with a synthetic peptide corresponding a region of human CIB3.
Purification:	Antibody is purified by peptide affinity chromatography method.

Target Details

Target:	CIB3
Alternative Name:	CIB3 (CIB3 Products)
Background:	The specific function of CIB3 is not yet known. This gene product shares a high degree of sequence similarity with DNA-dependent protein kinase catalytic subunit-interacting protein 2 in human and mouse, and like them may bind the catalytic subunit of DNA-dependent protein kinases. The exact function of this gene is not known.
Molecular Weight:	22 kDa

Target Details

Gene ID: 117286

NCBI Accession: [NP_473454](#)

UniProt: [Q96Q77](#)

Application Details

Application Notes: CIB3 antibody can be used for detection of CIB3 by ELISA at 1:62500. CIB3 antibody can be used for detection of CIB3 by western blot at 1 µg/mL, and HRP conjugated secondary antibody should be diluted 1:50,000 - 100,000.

Restrictions: For Research Use only

Handling

Format: Lyophilized

Reconstitution: Add 50 µL of distilled water. Final antibody concentration is 1 mg/mL.

Concentration: 1 mg/mL

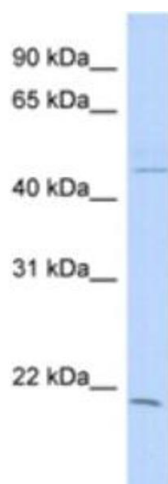
Buffer: Antibody is lyophilized in PBS buffer with 2 % sucrose.

Handling Advice: As with any antibody avoid repeat freeze-thaw cycles.

Storage: 4 °C/-20 °C

Storage Comment: For short periods of storage (days) store at 4 °C. For longer periods of storage, store CIB3 antibody at -20 °C.

Images



Western Blotting

Image 1.