



Datasheet for ABIN2463927

## anti-LACC1 antibody



[Go to Product page](#)

### 1 Image

#### Overview

Quantity:	100 µL
Target:	LACC1 (C13orf31)
Reactivity:	Human, Mouse, Rat
Host:	Rabbit
Clonality:	Polyclonal
Conjugate:	This LACC1 antibody is un-conjugated
Application:	Western Blotting (WB), ELISA

#### Product Details

Immunogen:	Antibody produced in rabbits immunized with a synthetic peptide corresponding a region of human C13orf31.
Purification:	Antibody is purified by peptide affinity chromatography method.

#### Target Details

Target:	LACC1 (C13orf31)
Alternative Name:	C13orf31 ( <a href="#">C13orf31 Products</a> )
Background:	The exact functions of C13orf31 remain unknown.
Molecular Weight:	48 kDa
Gene ID:	144811
NCBI Accession:	<a href="#">NP_694950</a>

## Target Details

---

UniProt: [Q8IV20](#)

## Application Details

---

Application Notes: C13orf31 antibody can be used for detection of C13orf31 by ELISA at 1:1562500. C13orf31 antibody can be used for detection of C13orf31 by western blot at 1 µg/mL, and HRP conjugated secondary antibody should be diluted 1:50,000 - 100,000.

Restrictions: For Research Use only

## Handling

---

Format: Lyophilized

Reconstitution: Add 50 µL of distilled water. Final antibody concentration is 1 mg/mL.

Concentration: 1 mg/mL

Buffer: Antibody is lyophilized in PBS buffer with 2 % sucrose.

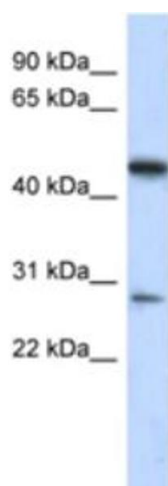
Handling Advice: As with any antibody avoid repeat freeze-thaw cycles.

Storage: 4 °C/-20 °C

Storage Comment: For short periods of storage (days) store at 4 °C. For longer periods of storage, store C13orf31 antibody at -20 °C.

## Images

---



### Western Blotting

Image 1.