

Datasheet for ABIN2463948

## anti-LYSMD1 antibody

### 1 Image



[Go to Product page](#)

### Overview

Quantity:	100 µL
Target:	LYSMD1
Reactivity:	Human, Mouse, Rat
Host:	Rabbit
Clonality:	Polyclonal
Conjugate:	This LYSMD1 antibody is un-conjugated
Application:	ELISA, Western Blotting (WB)

### Product Details

Immunogen:	Antibody produced in rabbits immunized with a synthetic peptide corresponding a region of human LYSMD1.
Purification:	Antibody is purified by peptide affinity chromatography method.

### Target Details

Target:	LYSMD1
Alternative Name:	LYSMD1 ( <a href="#">LYSMD1 Products</a> )
Background:	The specific function of this protein remains unknown.
Molecular Weight:	25 kDa
Gene ID:	388695
NCBI Accession:	<a href="#">NP_997716</a>

## Target Details

UniProt: [Q96S90](#)

## Application Details

Application Notes: LYSMD1 antibody can be used for detection of LYSMD1 by ELISA at 1:312500. LYSMD1 antibody can be used for detection of LYSMD1 by western blot at 1 µg/mL, and HRP conjugated secondary antibody should be diluted 1:50,000 - 100,000.

Restrictions: For Research Use only

## Handling

Format: Lyophilized

Reconstitution: Add 50 µL of distilled water. Final antibody concentration is 1 mg/mL.

Concentration: 1 mg/mL

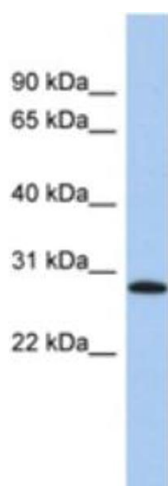
Buffer: Antibody is lyophilized in PBS buffer with 2 % sucrose.

Handling Advice: As with any antibody avoid repeat freeze-thaw cycles.

Storage: 4 °C/-20 °C

Storage Comment: For short periods of storage (days) store at 4 °C. For longer periods of storage, store LYSMD1 antibody at -20 °C.

## Images



### Western Blotting

Image 1.