

Datasheet for ABIN2463977
anti-MARVELD3 antibody



[Go to Product page](#)

1 Image

Overview

Quantity:	100 µL
Target:	MARVELD3
Reactivity:	Human, Mouse, Dog
Host:	Rabbit
Clonality:	Polyclonal
Conjugate:	This MARVELD3 antibody is un-conjugated
Application:	ELISA, Western Blotting (WB), Immunohistochemistry (IHC)

Product Details

Immunogen:	Antibody produced in rabbits immunized with a synthetic peptide corresponding a region of human MARVELD3.
Purification:	Antibody is purified by peptide affinity chromatography method.

Target Details

Target:	MARVELD3
Alternative Name:	MARVELD3 (MARVELD3 Products)
Background:	The function remains unknown.
Molecular Weight:	46 kDa
Gene ID:	91862
NCBI Accession:	NP_001017967

Target Details

UniProt:	A8K820
Pathways:	Cell-Cell Junction Organization

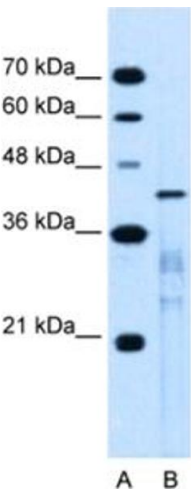
Application Details

Application Notes:	MARVELD3 antibody can be used for detection of MARVELD3 by ELISA at 1:312500. MARVELD3 antibody can be used for detection of MARVELD3 by western blot at 0.25 µg/mL, and HRP conjugated secondary antibody should be diluted 1:50,000 - 100,000.
Restrictions:	For Research Use only

Handling

Format:	Lyophilized
Reconstitution:	Add 50 µL of distilled water. Final antibody concentration is 1 mg/mL.
Concentration:	1 mg/mL
Buffer:	Antibody is lyophilized in PBS buffer with 2 % sucrose.
Handling Advice:	As with any antibody avoid repeat freeze-thaw cycles.
Storage:	4 °C/-20 °C
Storage Comment:	For short periods of storage (days) store at 4 °C. For longer periods of storage, store MARVELD3 antibody at -20 °C.

Images



Western Blotting

Image 1.