

Datasheet for ABIN2463983
anti-RCE1/FACE2 antibody



[Go to Product page](#)

1 Image

Overview

Quantity:	100 µL
Target:	RCE1/FACE2 (RCE1)
Reactivity:	Human, Mouse, Rat, Dog
Host:	Rabbit
Clonality:	Polyclonal
Conjugate:	This RCE1/FACE2 antibody is un-conjugated
Application:	ELISA, Immunohistochemistry (IHC), Western Blotting (WB)

Product Details

Immunogen:	Antibody produced in rabbits immunized with a synthetic peptide corresponding a region of human RCE1.
Purification:	Antibody is purified by protein A chromatography method.

Target Details

Target:	RCE1/FACE2 (RCE1)
Alternative Name:	RCE1 (RCE1 Products)
Background:	RCE1 is an integral membrane protein which is classified as a member of the metalloproteinase family. This enzyme is thought to function in the maintenance and processing of CAAX-type prenylated proteins. This gene encodes an integral membrane protein which is classified as a member of the metalloproteinase family. This enzyme is thought to function in the maintenance and processing of CAAX-type prenylated proteins.

Target Details

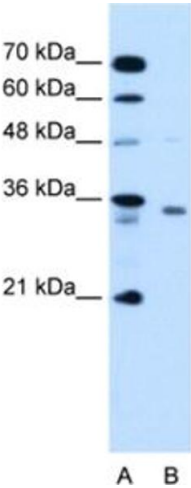
Molecular Weight:	36 kDa, 25 kDa
Gene ID:	9986
NCBI Accession:	NP_005124
UniProt:	Q9Y256

Application Details

Application Notes:	RCE1 antibody can be used for detection of RCE1 by ELISA at 1:312500. RCE1 antibody can be used for detection of RCE1 by western blot at 1.25 µg/mL, and HRP conjugated secondary antibody should be diluted 1:50,000 - 100,000.
Restrictions:	For Research Use only

Handling

Format:	Lyophilized
Reconstitution:	Add 100 µL of distilled water. Final antibody concentration is 1 mg/mL.
Concentration:	1 mg/mL
Buffer:	Antibody is lyophilized in PBS buffer with 2 % sucrose.
Handling Advice:	As with any antibody avoid repeat freeze-thaw cycles.
Storage:	4 °C/-20 °C
Storage Comment:	For short periods of storage (days) store at 4 °C. For longer periods of storage, store RCE1 antibody at -20 °C.



Western Blotting

Image 1.