

Datasheet for ABIN2463999

anti-CLCC1 antibody[Go to Product page](#)**1** Image

Overview

Quantity:	100 µL
Target:	CLCC1
Reactivity:	Human, Rat, Mouse, Dog
Host:	Rabbit
Clonality:	Polyclonal
Conjugate:	This CLCC1 antibody is un-conjugated
Application:	Western Blotting (WB), ELISA, Immunohistochemistry (IHC)

Product Details

Immunogen:	Antibody produced in rabbits immunized with a synthetic peptide corresponding a region of human CLCC1.
Purification:	Antibody is purified by protein A chromatography method.

Target Details

Target:	CLCC1
Alternative Name:	CLCC1 (CLCC1 Products)
Background:	CLCC1 seems to act as a chloride ion channel.
Molecular Weight:	61 kDa
Gene ID:	23155
NCBI Accession:	NP_001041675

Target Details

UniProt:	Q96S66
Pathways:	SARS-CoV-2 Protein Interactome , The Global Phosphorylation Landscape of SARS-CoV-2 Infection

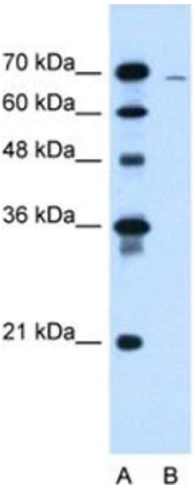
Application Details

Application Notes:	CLCC1 antibody can be used for detection of CLCC1 by ELISA at 1:62500. CLCC1 antibody can be used for detection of CLCC1 by western blot at 1.25 µg/mL, and HRP conjugated secondary antibody should be diluted 1:50,000 - 100,000.
Restrictions:	For Research Use only

Handling

Format:	Lyophilized
Reconstitution:	Add 100 µL of distilled water. Final antibody concentration is 1 mg/mL.
Concentration:	1 mg/mL
Buffer:	Antibody is lyophilized in PBS buffer with 2 % sucrose.
Handling Advice:	As with any antibody avoid repeat freeze-thaw cycles.
Storage:	4 °C/-20 °C
Storage Comment:	For short periods of storage (days) store at 4 °C. For longer periods of storage, store CLCC1 antibody at -20 °C.

Images



Western Blotting

Image 1.