

Datasheet for ABIN2464001
anti-CRELD1 antibody



[Go to Product page](#)

1 Image

Overview

Quantity:	100 µL
Target:	CRELD1
Reactivity:	Human, Dog
Host:	Rabbit
Clonality:	Polyclonal
Conjugate:	This CRELD1 antibody is un-conjugated
Application:	Immunohistochemistry (IHC), Western Blotting (WB), ELISA

Product Details

Immunogen:	Antibody produced in rabbits immunized with a synthetic peptide corresponding a region of human CRELD1.
Purification:	Antibody is purified by protein A chromatography method.

Target Details

Target:	CRELD1
Alternative Name:	CRELD1 (CRELD1 Products)
Background:	Epidermal growth factor (EGF, MIM 131530)-like repeats are a class of cysteine-rich domains that mediate interactions between proteins of diverse function. EGF domains are found in proteins that are either completely secreted or have transmembrane regions that tether the protein to the cell surface. CRELD1 is the founding member of a family of matricellular proteins.
Molecular Weight:	45 kDa, 45 kDa

Target Details

Gene ID:	78987
NCBI Accession:	NP_001070883
UniProt:	Q96HD1

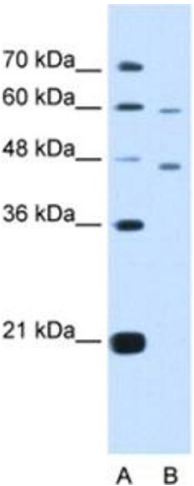
Application Details

Application Notes:	CRELD1 antibody can be used for detection of CRELD1 by ELISA at 1:312500. CRELD1 antibody can be used for detection of CRELD1 by western blot at 5.0 µg/mL, and HRP conjugated secondary antibody should be diluted 1:50,000 - 100,000.
Restrictions:	For Research Use only

Handling

Format:	Lyophilized
Reconstitution:	Add 100 µL of distilled water. Final antibody concentration is 1 mg/mL.
Concentration:	1 mg/mL
Buffer:	Antibody is lyophilized in PBS buffer with 2 % sucrose.
Handling Advice:	As with any antibody avoid repeat freeze-thaw cycles.
Storage:	4 °C/-20 °C
Storage Comment:	For short periods of storage (days) store at 4 °C. For longer periods of storage, store CRELD1 antibody at -20 °C.

Images



Western Blotting

Image 1.