

Datasheet for ABIN2464059

anti-GSK3 alpha antibody (truncated)**3** Images[Go to Product page](#)

Overview

Quantity:	0.1 mL
Target:	GSK3 alpha (GSK3a)
Binding Specificity:	truncated
Reactivity:	Human
Host:	Mouse
Clonality:	Monoclonal
Conjugate:	This GSK3 alpha antibody is un-conjugated
Application:	Western Blotting (WB), Immunohistochemistry (IHC), ELISA

Product Details

Immunogen:	Ni-NTA purified truncated recombinant GSK3 alpha expressed in E. Coli strain BL21 (DE3).
Clone:	6G2F1-6G2F2

Target Details

Target:	GSK3 alpha (GSK3a)
Alternative Name:	GSK3alpha (GSK3a Products)
Background:	GSK3 alpha (Glycogen synthase kinase 3 alpha), with 483-amino acid protein (about 53 kDa), belongs to the Ser/Thr family of protein kinases, Cdc2/cdkx subfamily, GSK3 subsubfamily, which also includes GSK3 beta. GSK3 is a multifunctional serine/threonine kinase that is usually inactivated by serine phosphorylation in response to extracellular cues. GSK3 is a key regulator of numerous signalling pathways, including cellular responses to Wnt, receptor tyrosine kinases

Target Details

and G-protein-coupled receptors and is involved in a wide range of cellular processes, ranging from glycogen metabolism to cell cycle regulation and proliferation. GSK3 alpha is implicated in the control of several regulatory proteins including glycogen synthase and transcription factors.

Gene ID: 2931

UniProt: [P49840](#)

Pathways: [PI3K-Akt Signaling](#), [WNT Signaling](#), [Fc-epsilon Receptor Signaling Pathway](#), [EGFR Signaling Pathway](#), [Neurotrophin Signaling Pathway](#), [cAMP Metabolic Process](#), [Cellular Glucan Metabolic Process](#), [Regulation of Muscle Cell Differentiation](#), [Regulation of G-Protein Coupled Receptor Protein Signaling](#), [ER-Nucleus Signaling](#), [Regulation of Carbohydrate Metabolic Process](#), [BCR Signaling](#), [Warburg Effect](#)

Application Details

Application Notes: Western Blot: 1:500 - 1:2,000
IHC(P): 1:500 - 1:2,000
IHC(F): 1:500 - 1:2,000
ELISA: Propose dilution 1:10,000.
Determining optimal working dilutions by titration test.

Restrictions: For Research Use only

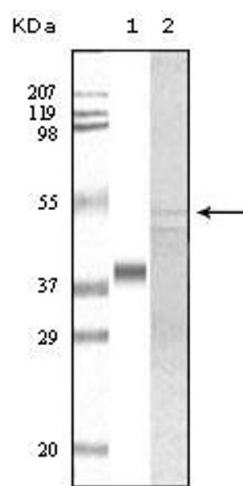
Handling

Format: Liquid

Handling Advice: As with all antibodies care should be taken to avoid repeated freeze thaw cycles. Antibodies should not be exposed to prolonged high temperatures.

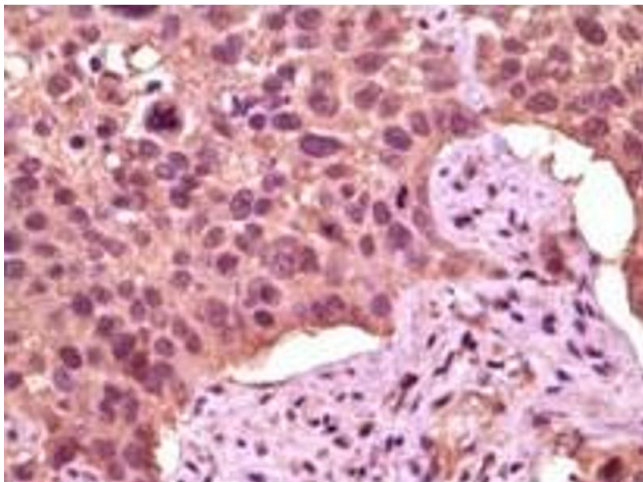
Storage: -20 °C

Storage Comment: GSK3 alpha monoclonal antibody can be stored at -20 °C, stable for one year.



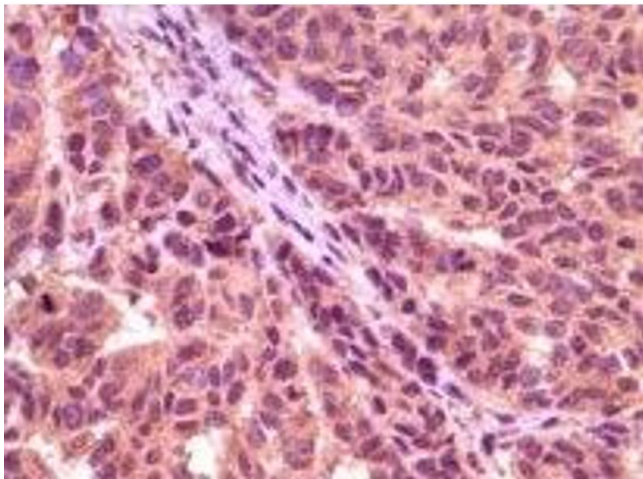
Western Blotting

Image 1.



Immunohistochemistry

Image 2.



Immunohistochemistry

Image 3.