

Datasheet for ABIN2464090

**anti-ENDOU antibody (truncated)**[Go to Product page](#)**1** Image

## Overview

Quantity:	0.1 mL
Target:	ENDOU
Binding Specificity:	truncated
Reactivity:	Human
Host:	Mouse
Clonality:	Monoclonal
Conjugate:	This ENDOU antibody is un-conjugated
Application:	ELISA, Western Blotting (WB), Flow Cytometry (FACS)

## Product Details

Immunogen:	Ni-NTA purified truncated recombinant P11 expressed in E. Coli strain BL21 (DE3).
Clone:	4E7E10
Isotype:	IgG1

## Target Details

Target:	ENDOU
Alternative Name:	P11 ( <a href="#">ENDOU Products</a> )
Background:	S100 calcium binding protein A10 (S100A10/P11), The protein encoded by this gene is a member of the S100 family of proteins containing 2 EF-hand calcium-binding motifs. S100 proteins are localized in the cytoplasm and/or nucleus of a wide range of cells, and involved in the regulation of a number of cellular processes such as cell cycle progression and

## Target Details

differentiation. S100 genes include at least 13 members which are located as a cluster on chromosome 1q21. This protein may function in exocytosis and endocytosis.

Gene ID: 8909

UniProt: [P21128](#)

## Application Details

Application Notes: Dilution  
ELISA:Propose dilution 1:10,000  
WB:1:100 - 1:500  
IF:1:100 - 1:500  
FCM:1:100 - 1:500  
Determining optimal working dilutions by titration test.

Restrictions: For Research Use only

## Handling

Format: Liquid

Buffer: Ascitic fluid containing 0.03 % sodium azide.

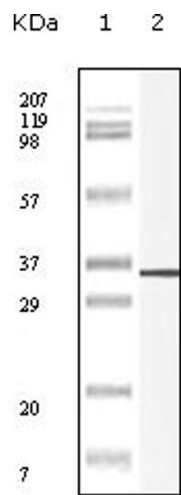
Preservative: Sodium azide

Precaution of Use: This product contains Sodium azide: a POISONOUS AND HAZARDOUS SUBSTANCE which should be handled by trained staff only.

Handling Advice: As with all antibodies care should be taken to avoid repeated freeze thaw cycles. Antibodies should not be exposed to prolonged high temperatures.

Storage: -20 °C

Storage Comment: P11 monoclonal antibody can be stored at -20 °C, stable for one year.



Western Blotting

Image 1.