

Datasheet for ABIN2464096

**anti-RAB25 antibody****2** Images[Go to Product page](#)

## Overview

Quantity:	0.1 mg
Target:	RAB25
Reactivity:	Human
Host:	Mouse
Clonality:	Monoclonal
Conjugate:	This RAB25 antibody is un-conjugated
Application:	ELISA, Western Blotting (WB), Immunohistochemistry (IHC)

## Product Details

Immunogen:	Ni-NTA purified recombinant Rab25 expressed in E. Coli strain BL21 (DE3).
Clone:	3F12F3
Isotype:	IgG2a
Purification:	Antibody is purified by protein A affinity chromatography and resuspended in PBS with 0.2%BSA, 0.09% sodium azide.

## Target Details

Target:	RAB25
Alternative Name:	Rab25 ( <a href="#">RAB25 Products</a> )
Background:	Members of the Ras-related superfamily of GTP binding proteins, which includes Ras, Rho, Rab and ARF subfamilies, exhibit 30-50% similarity with Ras p21. Rab proteins play an important role for either in endocytosis or in biosynthetic protein transport. The possibility that Rab

## Target Details

---

proteins might also direct the exocytosis from secretory vesicles to the plasma membrane is supported by the observation that in yeast, the SEC4 protein, which is 40% similar to Rab proteins, is associated with secretory vesicles. Rab proteins located on the cytoplasmic face of organelles and vesicles, rab proteins are involved in intracellular membrane fusion reactions. Rab25 was cloned from a gastric parietal cell cDNA library and is expressed in epithelial tissues such as the gastrointestinal mucosae, kidney, and lung, which encoded a protein of 28 kDa.

Gene ID: 57111

UniProt: [P57735](#)

## Application Details

---

Application Notes: Western Blot:1:500 - 1:2,000  
IHC(P):1:500 - 1:2,000  
IHC(F):1:500 - 1:2,000  
ELISA:Propose dilution 1:10,000.  
Determining optimal working dilutions by titration test.

Restrictions: For Research Use only

## Handling

---

Buffer: Purified antibody in PBS containing 0.03 % sodium azide.

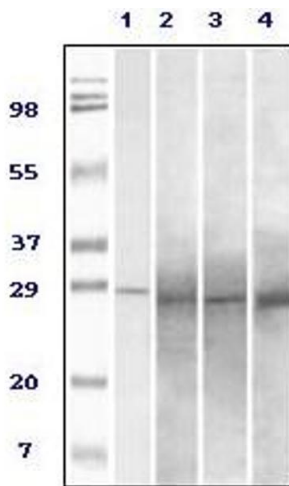
Preservative: Sodium azide

Precaution of Use: This product contains Sodium azide: a POISONOUS AND HAZARDOUS SUBSTANCE which should be handled by trained staff only.

Handling Advice: As with all antibodies care should be taken to avoid repeated freeze thaw cycles. Antibodies should not be exposed to prolonged high temperatures.

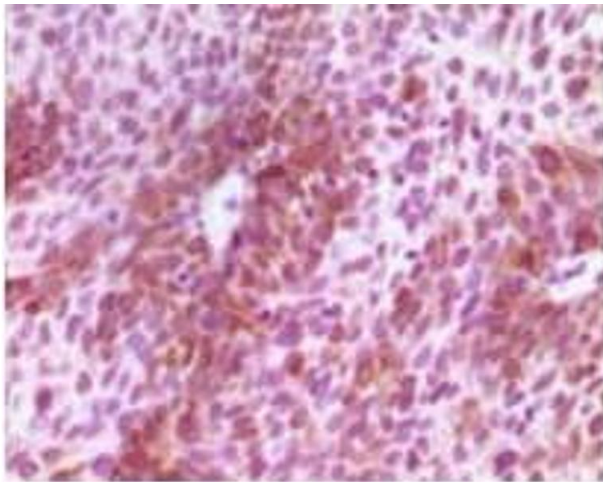
Storage: -20 °C

Storage Comment: Rab25 monoclonal antibody can be stored at -20 °C, stable for one year.



### Western Blotting

Image 1.



### Immunohistochemistry

Image 2.