

Datasheet for ABIN2464101  
**anti-S100A1 antibody (truncated)**



[Go to Product page](#)

2 Images

## Overview

Quantity:	0.1 mL
Target:	S100A1
Binding Specificity:	truncated
Reactivity:	Human
Host:	Mouse
Clonality:	Monoclonal
Conjugate:	This S100A1 antibody is un-conjugated
Application:	ELISA

## Product Details

Immunogen:	Ni-NTA purified truncated recombinant S100A expressed in E. Coli strain BL21 (DE3).
Clone:	2C8B8-2C8E8
Isotype:	IgG1
Purification:	Antibody is purified by protein A affinity chromatography.

## Target Details

Target:	S100A1
Alternative Name:	S100A ( <a href="#">S100A1 Products</a> )
Background:	S100 calcium binding protein A1 (S100-alpha/ S100A1), The protein encoded by this gene is a member of the S100 family of proteins containing 2 EF-hand calcium-binding motifs. S100

## Target Details

proteins are localized in the cytoplasm and/or nucleus of a wide range of cells, and involved in the regulation of a number of cellular processes such as cell cycle progression and differentiation. S100 genes include at least 13 members which are located as a cluster on chromosome 1q21. This protein may function in stimulation of Ca<sup>2+</sup>-induced Ca<sup>2+</sup> release, inhibition of microtubule assembly, and inhibition of protein kinase C-mediated phosphorylation. Reduced expression of this protein has been implicated in cardiomyopathies.

Gene ID: 6271

UniProt: [P23297](#)

Pathways: [Regulation of Muscle Cell Differentiation](#), [Toll-Like Receptors Cascades](#), [S100 Proteins](#)

## Application Details

Application Notes: Dilution  
ELISA:Propose dilution 1:10,000  
Determining optimal working dilutions by titration test.

Restrictions: For Research Use only

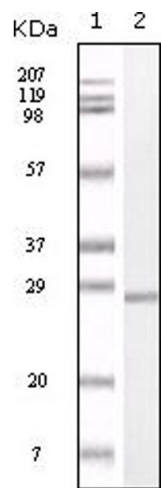
## Handling

Format: Liquid

Handling Advice: As with all antibodies care should be taken to avoid repeated freeze thaw cycles. Antibodies should not be exposed to prolonged high temperatures.

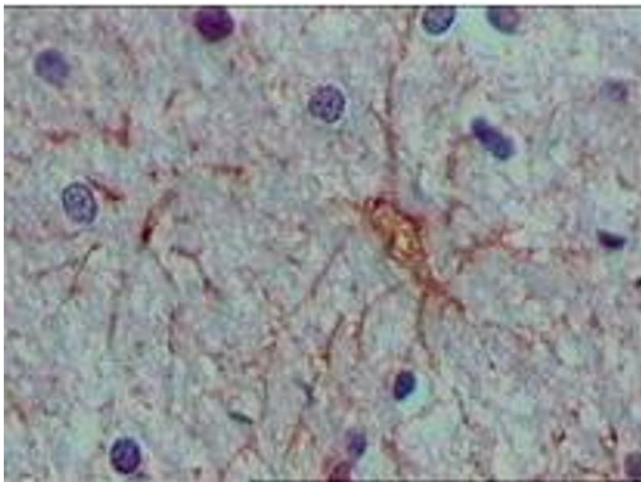
Storage: -20 °C

Storage Comment: S100A monoclonal antibody can be stored at -20 °C, stable for one year.



Western Blotting

Image 1.



Immunohistochemistry

Image 2.