

Datasheet for ABIN2464104  
**anti-SNCG antibody (truncated)**



[Go to Product page](#)

2 Images

## Overview

Quantity:	0.1 mg
Target:	SNCG
Binding Specificity:	truncated
Reactivity:	Human
Host:	Mouse
Clonality:	Monoclonal
Conjugate:	This SNCG antibody is un-conjugated
Application:	Western Blotting (WB), Immunohistochemistry (IHC), ELISA

## Product Details

Immunogen:	Ni-NTA purified truncated recombinant SNCG expressed in E. Coli strain BL21 (DE3).
Clone:	1H10D2
Isotype:	IgG1
Purification:	Antibody is purified by protein A affinity chromatography.

## Target Details

Target:	SNCG
Alternative Name:	SNCG ( <a href="#">SNCG Products</a> )
Background:	SNCG(also designated gamma-synuclein or breast cancer-specific protein 1),with 127-amino acid protein(about 14 kDa), belongs to the synuclein family, which also includes alpha- and

## Target Details

---

beta- synuclein. Three synucleins are located in the neuronal cytosol and enriched in presynaptic terminals, while SNCG is also expressed in many other non-neuronal tissues. SNCG is abnormally expressed in a high percentage of tumor tissues of diversified cancer types, including liver, esophagus, colon, gastric, lung, prostate, cervical, and breast cancer, but rarely expressed in tumor-matched nonneoplastic adjacent tissues. High levels of SNCG have been identified in advanced breast carcinomas suggesting a correlation between overexpression of SNCG and breast tumor development.

---

Gene ID: 6623

---

UniProt: [O76070](#)

## Application Details

---

Application Notes: Western Blot: 1:500 - 1:2,000  
IHC(P): 1:500 - 1:2,000  
IHC(F): 1:500 - 1:2,000  
ELISA: Propose dilution 1:10,000.  
Determining optimal working dilutions by titration test.

---

Restrictions: For Research Use only

## Handling

---

Buffer: Purified antibody in PBS containing 0.03 % sodium azide

---

Preservative: Sodium azide

---

Precaution of Use: This product contains Sodium azide: a POISONOUS AND HAZARDOUS SUBSTANCE which should be handled by trained staff only.

---

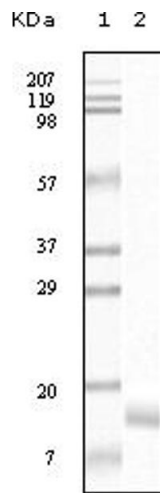
Handling Advice: As with all antibodies care should be taken to avoid repeated freeze thaw cycles. Antibodies should not be exposed to prolonged high temperatures.

---

Storage: -20 °C

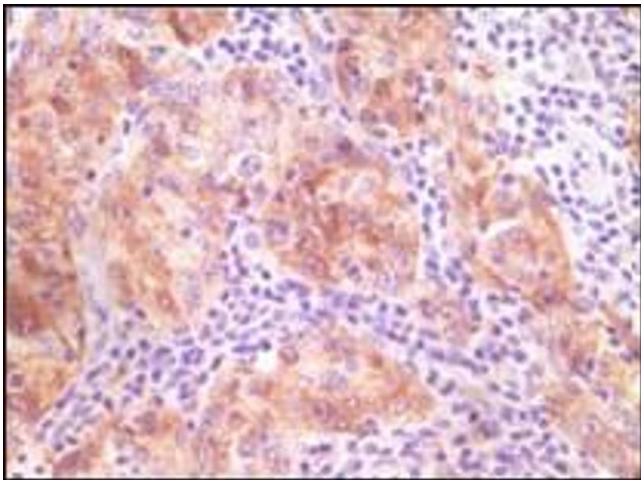
---

Storage Comment: SNCG (breast cancer-specific protein 1) monoclonal antibody can be stored at -20 °C, stable for one year.



### Western Blotting

Image 1.



### Immunohistochemistry

Image 2.