



[Go to Product page](#)

Datasheet for ABIN2465558

anti-Cripto-1 antibody (Internal Region)

1 Image

Overview

Quantity:	0.1 mg
Target:	Cripto-1 (TDGF1.3)
Binding Specificity:	Internal Region
Reactivity:	Human
Host:	Goat
Clonality:	Polyclonal
Conjugate:	This Cripto-1 antibody is un-conjugated
Application:	ELISA

Product Details

Immunogen:	Cripto-1 antibody was raised against a 16 amino acid synthetic peptide near the internal region of Cripto-1.
Purification:	Cripto-1 antibody was purified from goat serum by ammonium sulphate precipitation followed by antigen affinity chromatography using the immunizing peptide.

Target Details

Target:	Cripto-1 (TDGF1.3)
Alternative Name:	Cripto-1 (TDGF1.3 Products)
Gene ID:	55997
NCBI Accession:	NP_115934

Target Details

UniProt: [P0CG37](#)

Application Details

Application Notes: ELISA: Antibody detection limit dilution 1:32,000. Western Blot: Approximately 55 kDa band in human breast, placenta and testis lysates after 0.1 µg/mL antibody staining. 6 kDa according to NP_115934.1. The 55 kDa band was successfully blocked by incubation with the immunizing peptide.

Restrictions: For Research Use only

Handling

Format: Liquid

Concentration: 500 µg/mL

Buffer: Tris saline, 0.02 % sodium azide, pH 7.3 with 0.5 % bovine serum albumin.

Preservative: Sodium azide

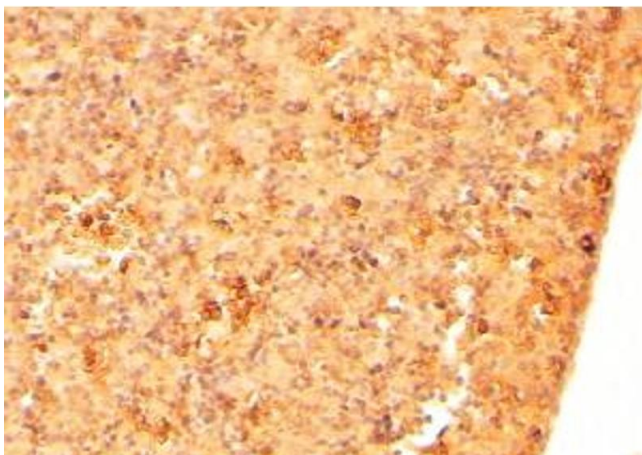
Precaution of Use: This product contains Sodium azide: a POISONOUS AND HAZARDOUS SUBSTANCE which should be handled by trained staff only.

Handling Advice: Minimize freezing and thawing.

Storage: -20 °C

Storage Comment: Aliquot and store at -20 °C.

Images



Immunohistochemistry

Image 1. Immunohistochemistry (2µg/ml) staining of paraffin embedded Mouse Embryo Liver. Steamed antigen retrieval with citrate buffer pH 6, HRP-staining.