

Datasheet for ABIN2468063
anti-LSM1 antibody (AA 1-133)[Go to Product page](#)

1 Image

Overview

Quantity:	0.05 mg
Target:	LSM1
Binding Specificity:	AA 1-133
Reactivity:	Human, Mouse, Rat
Host:	Chicken
Clonality:	Polyclonal
Conjugate:	This LSM1 antibody is un-conjugated
Application:	Western Blotting (WB)

Product Details

Purification:	Immunoaffinity Purified
---------------	-------------------------

Target Details

Target:	LSM1
Alternative Name:	LSM1 (LSM1 Products)

Background: **FUNCTION:** Binds specifically to the 3'-terminal U-tract of U6 snRNA.

SUBUNIT: LSm subunits form a heteromer with a doughnut shape.

SIMILARITY: Belongs to the snRNP Sm proteins family.

Target Details

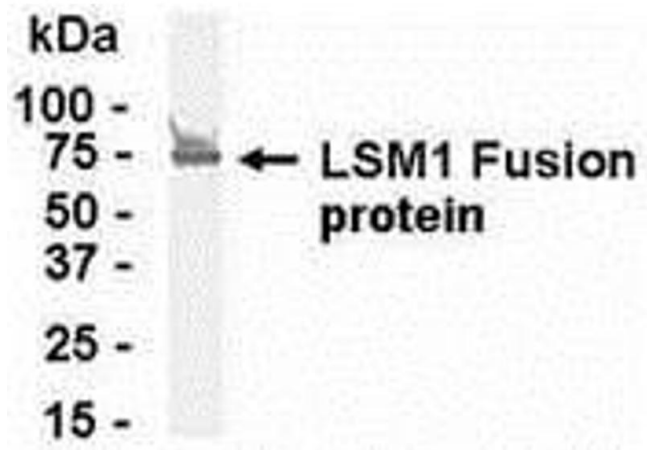
SUBCELLULAR LOCATION: Nuclear (Potential).	
TISSUE SPECIFICITY: Has elevated expression in pancreatic cancer and in several cancer-derived cell lines.	
Molecular Weight:	45.2 kDa (calculated)
Gene ID:	27257
NCBI Accession:	NP_055277
UniProt:	O15116

Application Details

Application Notes:	U6 snRNA-associated Sm-like protein LSm1 antibody can be used for the detection of U6 snRNA-associated Sm-like protein LSm1 by Western Blot.
Restrictions:	For Research Use only

Handling

Format:	Liquid
Concentration:	1 mg/mL
Buffer:	Phosphate-Buffered Saline. No preservatives added.
Preservative:	Without preservative
Handling Advice:	As with all antibodies care should be taken to avoid repeated freeze thaw cycles. Antibodies should not be exposed to prolonged high temperatures.
Storage:	4 °C/-20 °C
Storage Comment:	LSM1 antibody can be stored at 4 °C for short term (weeks). Long term storage should be at -20 °C.



Western Blotting

Image 1.