

Datasheet for ABIN2468250

**ATG12 Protein (AA 101-141) (His tag)**[Go to Product page](#)**1** Image

## Overview

Quantity:	0.05 mg
Target:	ATG12
Protein Characteristics:	AA 101-141
Origin:	Human, Mouse
Source:	Escherichia coli (E. coli)
Protein Type:	Recombinant
Purification tag / Conjugate:	This ATG12 protein is labelled with His tag.
Application:	ELISA, Western Blotting (WB), Mass Spectrometry (MS), Neutralization (Neut)

## Product Details

Purity:	~95 %
---------	-------

## Target Details

Target:	ATG12
Alternative Name:	ATG12 ( <a href="#">ATG12 Products</a> )
Background:	Autophagy, the process of bulk degradation of cellular proteins through an autophagosomic-lysosomal pathway is important for normal growth control and may be defective in tumor cells. It is involved in the preservation of cellular nutrients under starvation conditions as well as the normal turnover of cytosolic components (1,2). This process is negatively regulated by TOR (Target of rapamycin) through phosphorylation of autophagy protein APG1 (3). ATG12, another member of the autophagy protein family, forms a conjugate with ATG5, this conjugate has a

## Target Details

ubiquitin-protein ligase (E3)-like activity for protein lipidation in autophagy (4). This conjugate also associates with innate immune response proteins such as RIG-I and VISA (also known as IPS-1), inhibiting type I interferon production and permitting viral replication in host cells (5). ATG12 has also been shown to interact with ATG10 in human embryonic kidney cells in the presence of ATG7 (6).

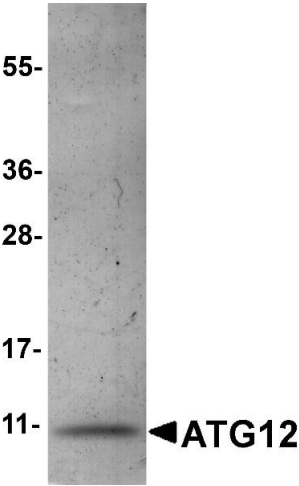
Molecular Weight:	10 kDa (Calculated)
Gene ID:	9140
OMIM:	17366729
UniProt:	<a href="#">O94817</a> , <a href="#">Q9CQY1</a>
Pathways:	<a href="#">Autophagy</a>

## Application Details

Application Notes:	This recombinant protein can be used for WB, ELISA, MS and neutralization assays.
Restrictions:	For Research Use only

## Handling

Format:	Liquid
Buffer:	1X PBS containing 0.1 % SDS
Handling Advice:	Avoid freeze/thaw cycles. When working with proteins care should be taken to keep recombinant protein at a cool and stable temperature.
Storage:	-80 °C
Storage Comment:	Store in working aliquots at -70 °C.



Western Blotting

Image 1.