



[Go to Product page](#)

Datasheet for ABIN2468253  
**ATP6V1E1 Protein (AA 1-226)**

1 Image

### Overview

Quantity:	0.05 mg
Target:	ATP6V1E1
Protein Characteristics:	AA 1-226
Origin:	Human
Source:	Escherichia coli (E. coli)
Protein Type:	Recombinant
Application:	ELISA, Western Blotting (WB), Mass Spectrometry (MS)

### Product Details

Purity: 95 %

### Target Details

Target: ATP6V1E1  
Alternative Name: ATP6V1E1 ([ATP6V1E1 Products](#))

**Background:** This protein is a component of vacuolar ATPase (V-ATPase), a multisubunit enzyme that mediates acidification of eukaryotic intracellular organelles. V-ATPase dependent organelle acidification is necessary for such intracellular processes as protein sorting, zymogen activation, and receptor-mediated endocytosis. V-ATPase is comprised of a cytosolic V1 domain and a transmembrane V0 domain. The V1 domain consists of a hexamer of three A and three B subunits plus the C, D, and E subunits. It contains the ATP catalytic site. The protein is known as the E subunit and is found ubiquitously.

## Target Details

---

Molecular Weight:	26 kDa (Calculated)
Gene ID:	529
NCBI Accession:	<a href="#">NP_001687</a>
OMIM:	4502317
UniProt:	<a href="#">P36543</a>
Pathways:	<a href="#">Transition Metal Ion Homeostasis, Proton Transport</a>

## Application Details

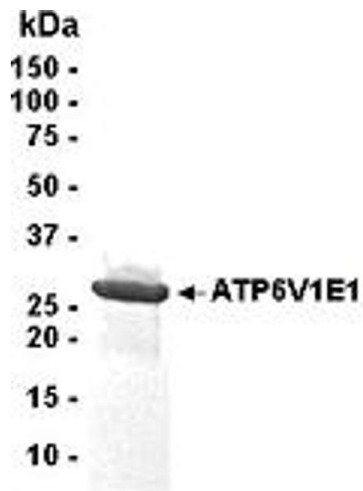
---

Application Notes:	This recombinant protein can be used for WB, ELISA, MS.
Restrictions:	For Research Use only

## Handling

---

Format:	Liquid
Buffer:	10 mM Tris, pH 8.0, 0.1 % Triton X-100, 0.002 % NaN
Preservative:	Sodium azide
Precaution of Use:	This product contains Sodium azide: a POISONOUS AND HAZARDOUS SUBSTANCE which should be handled by trained staff only.
Handling Advice:	Avoid freeze/thaw cycles. When working with proteins care should be taken to keep recombinant protein at a cool and stable temperature.
Storage:	-80 °C
Storage Comment:	Store in working aliquots at -70 °C.



Western Blotting

Image 1.