

Datasheet for ABIN2468386
Esterase D Protein (ESD) (AA 1-282)[Go to Product page](#)

1 Image

Overview

Quantity:	0.1 mg
Target:	Esterase D (ESD)
Protein Characteristics:	AA 1-282
Origin:	Human
Source:	Escherichia coli (E. coli)
Protein Type:	Recombinant
Application:	Western Blotting (WB), ELISA, Mass Spectrometry (MS)

Product Details

Purity:	95 %
---------	------

Target Details

Target:	Esterase D (ESD)
Alternative Name:	ESD (ESD Products)
Background:	A carboxylic ester + H ₂ O = an alcohol + a carboxylic anion. Homodimer. Cytoplasmic vesicles. There are two major electrophoretic isotypes. The sequence of the ESD*1 variant is shown. Similar to yeast HRE299.
Molecular Weight:	32.4 kDa (Calculated)
Gene ID:	2098
NCBI Accession:	NP_001975

Target Details

OMIM: 33413400

UniProt: [P10768](#)

Application Details

Application Notes: This recombinant protein can be used for WB, ELISA, MS.

Restrictions: For Research Use only

Handling

Format: Liquid

Buffer: 10 mM Tris, pH 8.0, 0.1 % Triton X-100, 0.002 % NaN

Preservative: Sodium azide

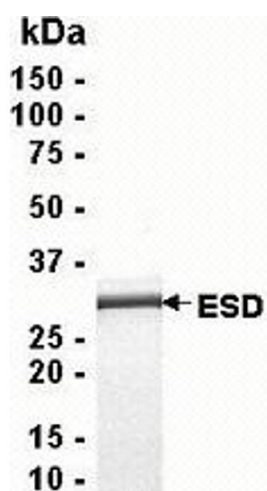
Precaution of Use: This product contains Sodium azide: a POISONOUS AND HAZARDOUS SUBSTANCE which should be handled by trained staff only.

Handling Advice: Avoid freeze/thaw cycles. When working with proteins care should be taken to keep recombinant protein at a cool and stable temperature.

Storage: -80 °C

Storage Comment: Store in working aliquots at -70 °C.

Images



Western Blotting

Image 1.