

Datasheet for ABIN2468786  
**MAT2A Protein (AA 1-395)**[Go to Product page](#)

## 1 Image

## Overview

Quantity:	0.1 mg
Target:	MAT2A
Protein Characteristics:	AA 1-395
Origin:	Human
Source:	Escherichia coli (E. coli)
Protein Type:	Recombinant
Application:	Western Blotting (WB), ELISA, Mass Spectrometry (MS)

## Product Details

Purity:	95 %
---------	------

## Target Details

Target:	MAT2A
Alternative Name:	MAT2A ( <a href="#">MAT2A Products</a> )
Background:	Methionine adenosyltransferase (EC 2.5.1.6) catalyzes the biosynthesis of S-adenosylmethionine (AdoMet) from methionine and ATP. AdoMet is the major methyl donor for many of the transmethylation reactions in the body. The MAT2A promoter is highly GC rich, especially in the first 300 bp. The promoter contains several potential SP1-, v-myb-, and GATA-binding sites, as well as potential binding sites for C/EBP, HSF2, c-myb, and STATx. It can efficiently drive expression from a reporter gene in both Jurkat and 293 cells.
Molecular Weight:	46 kDa (Calculated)

## Target Details

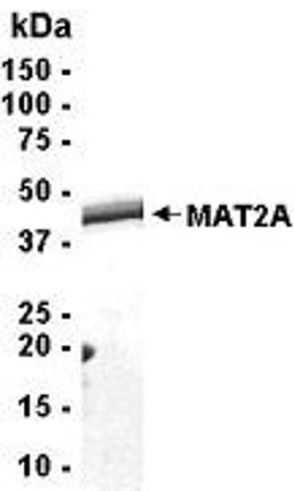
Gene ID:	4144
NCBI Accession:	<a href="#">NP_005902</a>
OMIM:	5174529
UniProt:	<a href="#">P31153</a>
Pathways:	<a href="#">Ribonucleoside Biosynthetic Process</a> , <a href="#">Methionine Biosynthetic Process</a>

## Application Details

Application Notes:	This recombinant protein can be used for WB, ELISA, MS.
Restrictions:	For Research Use only

## Handling

Format:	Liquid
Buffer:	10 mM Tris, pH 8.0, 0.1 % Triton X-100, 0.002 % NaN
Preservative:	Sodium azide
Precaution of Use:	This product contains Sodium azide: a POISONOUS AND HAZARDOUS SUBSTANCE which should be handled by trained staff only.
Handling Advice:	Avoid freeze/thaw cycles. When working with proteins care should be taken to keep recombinant protein at a cool and stable temperature.
Storage:	-80 °C
Storage Comment:	Store in working aliquots at -70 °C.



Western Blotting

Image 1.