

Datasheet for ABIN2468870

MTCH2 Protein (AA 29-174) (His tag)[Go to Product page](#)**1** Image

Overview

Quantity:	0.05 mg
Target:	MTCH2
Protein Characteristics:	AA 29-174
Origin:	Mouse
Source:	Escherichia coli (E. coli)
Protein Type:	Recombinant
Purification tag / Conjugate:	This MTCH2 protein is labelled with His tag.
Application:	Western Blotting (WB), ELISA, Mass Spectrometry (MS), Neutralization (Neut)

Product Details

Purity:	~95 %
---------	-------

Target Details

Target:	MTCH2
Alternative Name:	MTCH2 (MTCH2 Products)
Background:	Apoptosis plays a major role in normal organism development, tissue homeostasis, and removal of damaged cells. Disruption of this process has been implicated in a variety of diseases such as cancer (reviewed in 1). The Bcl-2 family of proteins is comprised of critical regulators of apoptosis that can be divided into two classes: those that inhibit apoptosis and those that promote cell death (reviewed in 2 and 3). MTCH2 is a member of the mitochondrial carrier protein family that catalyze the exchange of substrates across the inner mitochondrial

Target Details

membrane and is targeted by Bid, a pro-apoptotic Bcl-2 family member, in response to apoptotic signals (4-6), suggesting that MTCH2 may play a key role in the mitochondrial apoptosis pathway. The doublet observed in the SDS-PAGE is likely due to incomplete removal of the signal sequence.

Molecular Weight: 19 kDa (Calculated)

Gene ID: 56428

NCBI Accession: [NP_055157](#)

OMIM: 5815347

UniProt: [Q791V5](#)

Application Details

Application Notes: This recombinant protein can be used for WB, ELISA, MS and neutralization assays.

Restrictions: For Research Use only

Handling

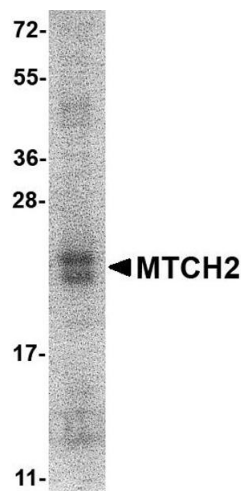
Format: Liquid

Buffer: 1X PBS containing 0.1 % SDS

Handling Advice: Avoid freeze/thaw cycles. When working with proteins care should be taken to keep recombinant protein at a cool and stable temperature.

Storage: -80 °C

Storage Comment: Store in working aliquots at -70 °C.



Western Blotting

Image 1.