

Datasheet for ABIN2468886

NELL2 Protein (AA 22-238) (His tag)[Go to Product page](#)**1** Image

Overview

Quantity:	0.05 mg
Target:	NELL2
Protein Characteristics:	AA 22-238
Origin:	Mouse
Source:	Escherichia coli (E. coli)
Protein Type:	Recombinant
Purification tag / Conjugate:	This NELL2 protein is labelled with His tag.
Application:	Western Blotting (WB), ELISA, Mass Spectrometry (MS), Neutralization (Neut)

Product Details

Purity:	~95 %
---------	-------

Target Details

Target:	NELL2
Alternative Name:	NELL2 (NELL2 Products)
Background:	NELL2 is a neuron-specific thrombospondin-1-like extracellular protein containing six epidermal growth factor-like domains (1). It is highly expressed in the hippocampus in vivo (2) and promotes survival of rat primary cultured neurons through activation of JNK and suppression of ERK (3). As ERK is required for the induction of hippocampal long term potentiation (LTP) and JNK appears to be inhibitory on LTP (4,5), it had been suggested that NELL2 may play a role in synaptic plasticity. More recently, NELL2 has been shown to promote differentiation of

Target Details

	motor and sensory neurons and stimulates mitogenesis of dorsal root ganglia in chickens (6).
Molecular Weight:	28 kDa (Calculated)
Gene ID:	54003
OMIM:	2494290
UniProt:	Q61220

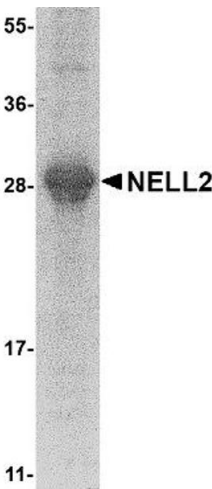
Application Details

Application Notes:	This recombinant protein can be used for WB, ELISA, MS and neutralization assays.
Restrictions:	For Research Use only

Handling

Format:	Liquid
Buffer:	100 mM sodium phosphate, 10 mM Tris, 500 mM NaCl, 25 mM imidazole, 2 mM MgCl ₂ , 10 % glycerol
Handling Advice:	Avoid freeze/thaw cycles. When working with proteins care should be taken to keep recombinant protein at a cool and stable temperature.
Storage:	-80 °C
Storage Comment:	Store in working aliquots at -70 °C.

Images



Western Blotting

Image 1.