

Datasheet for ABIN2468993  
**PSAT1 Protein (AA 1-370)**[Go to Product page](#)

## 1 Image

## Overview

Quantity:	0.1 mg
Target:	PSAT1
Protein Characteristics:	AA 1-370
Origin:	Human
Source:	Escherichia coli (E. coli)
Protein Type:	Recombinant
Application:	Western Blotting (WB), ELISA, Mass Spectrometry (MS)

## Product Details

Purity:	>95 %
---------	-------

## Target Details

Target:	PSAT1
Alternative Name:	PSAT1 ( <a href="#">PSAT1 Products</a> )
Background:	PSAT1 is likely a phosphoserine aminotransferase, based on similarity to proteins in mouse, rabbit, and Drosophila. It belongs to class-V of pyridoxal-phosphate-dependent aminotransferases and is required both in major phosphorylated pathway of serine biosynthesis and in the biosynthesis of pyridoxine.
Molecular Weight:	42.6 kDa (Calculated)
Gene ID:	29968
NCBI Accession:	<a href="#">NP_478059</a>

### Target Details

OMIM:	17402893
UniProt:	<a href="#">Q9Y617</a>
Pathways:	<a href="#">Warburg Effect</a>

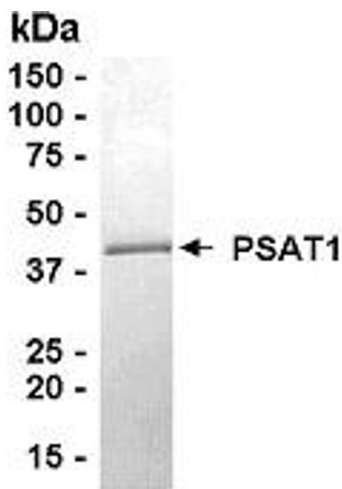
### Application Details

Application Notes:	This recombinant protein can be used for WB, ELISA, MS.
Restrictions:	For Research Use only

### Handling

Format:	Liquid
Buffer:	10 mM Tris, pH 8.0, 0.1 % Triton X-100, 0.002 % NaN
Preservative:	Sodium azide
Precaution of Use:	This product contains Sodium azide: a POISONOUS AND HAZARDOUS SUBSTANCE which should be handled by trained staff only.
Handling Advice:	Avoid freeze/thaw cycles. When working with proteins care should be taken to keep recombinant protein at a cool and stable temperature.
Storage:	-80 °C
Storage Comment:	Store in working aliquots at -70 °C.

### Validation report #100788 for Immunohistochemistry (IHC)



#### Western Blotting

Image 1.