

Datasheet for ABIN2468995
PSMC6 Protein (AA 1-389)[Go to Product page](#)

1 Image

Overview

Quantity:	0.05 mg
Target:	PSMC6
Protein Characteristics:	AA 1-389
Origin:	Human
Source:	Escherichia coli (E. coli)
Protein Type:	Recombinant
Application:	Western Blotting (WB), ELISA, Mass Spectrometry (MS)

Product Details

Purity:	95 %
---------	------

Target Details

Target:	PSMC6
Alternative Name:	PSMC6 (PSMC6 Products)
Background:	<p>The 26S proteasome is a multicatalytic proteinase complex with a highly ordered structure composed of 2 complexes, a 20S core and a 19S regulator. The 20S core is composed of 4 rings of 28 non-identical subunits, 2 rings are composed of 7 α subunits and 2 rings are composed of 7 beta subunits. The 19S regulator is composed of a base, which contains 6 ATPase subunits and 2 non-ATPase subunits, and a lid, which contains up to 10 non-ATPase subunits. Proteasomes are distributed throughout eukaryotic cells at a high concentration and cleave peptides in an ATP/ubiquitin-dependent process in a non-lysosomal pathway. An essential function of a modified proteasome, the immunoproteasome, is the processing of</p>

Target Details

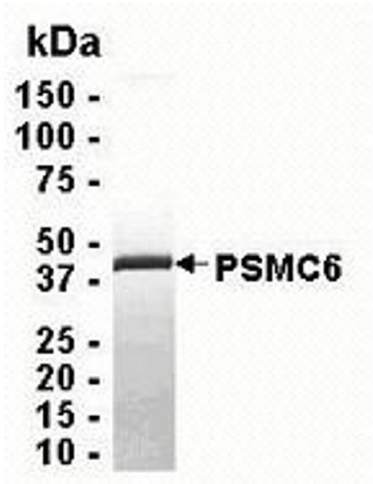
	class I MHC peptides.
Molecular Weight:	44.7 kDa (Calculated)
Gene ID:	5706
NCBI Accession:	NP_002797
OMIM:	24430160
UniProt:	P62333
Pathways:	Mitotic G1-G1/S Phases , DNA Replication , Synthesis of DNA , Ubiquitin Proteasome Pathway

Application Details

Application Notes:	This recombinant protein can be used for WB, ELISA, MS.
Restrictions:	For Research Use only

Handling

Format:	Liquid
Buffer:	10 mM Tris, pH 8.0, 0.1 % Triton X-100, 0.002 % NaN
Preservative:	Sodium azide
Precaution of Use:	This product contains Sodium azide: a POISONOUS AND HAZARDOUS SUBSTANCE which should be handled by trained staff only.
Handling Advice:	Avoid freeze/thaw cycles. When working with proteins care should be taken to keep recombinant protein at a cool and stable temperature.
Storage:	-80 °C
Storage Comment:	Store in working aliquots at -70 °C.



Western Blotting

Image 1.