

Datasheet for ABIN2469252

Chicken anti-Human IgM Antibody[Go to Product page](#)**1** Image

Overview

Quantity:	0.05 mg
Target:	IgM
Reactivity:	Human
Host:	Chicken
Clonality:	Polyclonal
Application:	Western Blotting (WB)

Product Details

Isotype:	IgY
Purification:	Immunoaffinity Purified

Target Details

Target:	IgM
Abstract:	IgM Products
Target Type:	Antibody

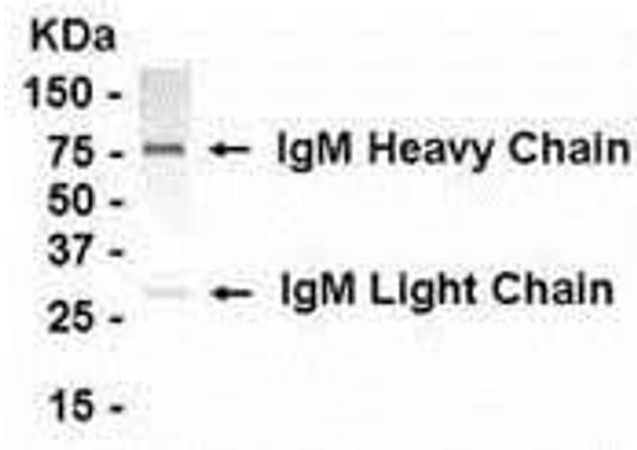
Application Details

Application Notes:	IgM antibody can be used for the detection of IgM by Western Blot.
Restrictions:	For Research Use only

Handling

Format:	Liquid
Concentration:	1 mg/mL
Buffer:	Phosphate-Buffered Saline. No preservatives added.
Preservative:	Without preservative
Handling Advice:	As with all antibodies care should be taken to avoid repeated freeze thaw cycles. Antibodies should not be exposed to prolonged high temperatures.
Storage:	4 °C/-20 °C
Storage Comment:	IgM IgY antibody can be stored at 4 °C for short term (weeks). Long term storage should be at -20 °C.

Images



Western Blotting

Image 1.