

Datasheet for ABIN2469312  
**anti-SLC5A9 antibody (C-Term)**[Go to Product page](#)

## 1 Image

## Overview

Quantity:	0.05 mg
Target:	SLC5A9
Binding Specificity:	C-Term
Reactivity:	Human, Monkey, Gorilla
Host:	Rabbit
Clonality:	Polyclonal
Conjugate:	This SLC5A9 antibody is un-conjugated
Application:	Immunohistochemistry (IHC)

## Product Details

Immunogen:	SLC5A9 antibody was raised against a peptide located near the C-Terminal region of SLC5A9 (Human).
Specificity:	BLAST analysis of the peptide immunogen showed no homology with other human proteins, except AFAP1L2 (60%).
Purification:	Immunoaffinity Chromatography

## Target Details

Target:	SLC5A9
Alternative Name:	SLC5A9 ( <a href="#">SLC5A9 Products</a> )
Gene ID:	200010

## Target Details

UniProt: [Q2M3M2](#)

## Application Details

Application Notes: SLC5A9 antibody can be used in ELISA, Western Blot starting at 1:500 - 1:1000, immunohistochemistry starting at 10 µg/mL, and flow cytometry.

Restrictions: For Research Use only

## Handling

Format: Liquid

Buffer: PBS, 0.1 % sodium azide.

Preservative: Sodium azide

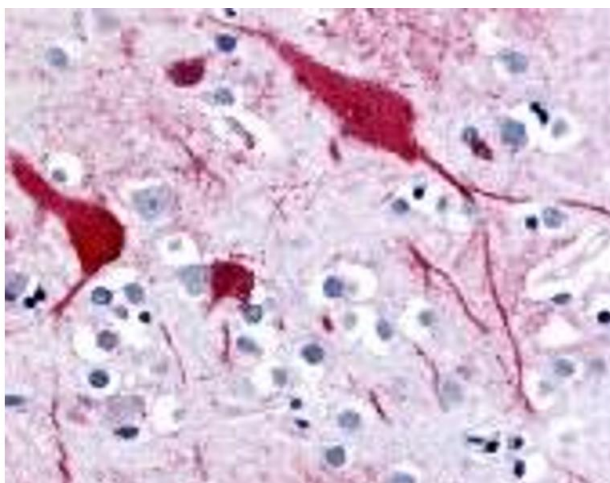
Precaution of Use: This product contains Sodium azide: a POISONOUS AND HAZARDOUS SUBSTANCE which should be handled by trained staff only.

Handling Advice: As with all antibodies avoid freeze/thaw cycles.

Storage: 4 °C/-80 °C

Storage Comment: SLC5A9 antibody should be stored long term (months) at -80 °C and short term (days) at 4 °C.

## Images



### Immunohistochemistry

Image 1.