

Datasheet for ABIN2469314

anti-SLC5A10 antibody (Cytoplasmic Domain)[Go to Product page](#)**1** Image

Overview

Quantity:	0.05 mg
Target:	SLC5A10
Binding Specificity:	Cytoplasmic Domain
Reactivity:	Human, Gibbon, Gorilla
Host:	Rabbit
Clonality:	Polyclonal
Conjugate:	This SLC5A10 antibody is un-conjugated
Application:	Immunohistochemistry (IHC)

Product Details

Immunogen:	SLC5A10 antibody was raised against a peptide located in the cytoplasmic domain of SLC5A10 (Human).
Specificity:	BLAST analysis of the peptide immunogen showed no homology with other human proteins, except SLC5A1 (67â€-%).
Purification:	Immunoaffinity Chromatography

Target Details

Target:	SLC5A10
Alternative Name:	SLC5A10 (SLC5A10 Products)
Gene ID:	125206

Target Details

UniProt: [A0PJK1](#)

Application Details

Application Notes: SLC5A10 antibody can be used in ELISA, Western Blot, immunohistochemistry starting at 5 μ g/mL, and immunofluorescence starting at 10 μ g/mL.

Restrictions: For Research Use only

Handling

Format: Liquid

Buffer: PBS, 0.1 % sodium azide.

Preservative: Sodium azide

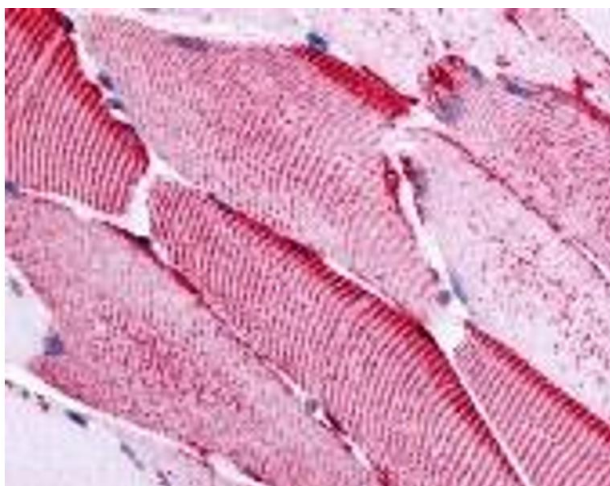
Precaution of Use: This product contains Sodium azide: a POISONOUS AND HAZARDOUS SUBSTANCE which should be handled by trained staff only.

Handling Advice: As with all antibodies avoid freeze/thaw cycles.

Storage: 4 °C/-80 °C

Storage Comment: SLC5A10 antibody should be stored long term (months) at -80 °C and short term (days) at 4 °C.

Images



Immunohistochemistry

Image 1.